

QINGDAO VENIT IMPORT AND EXPORT CO., LTD

Tel: +86-532-80921252 Fax: +86-532-80921252

Wechat / WhatsApp: +86-18954297651

Sales Manger: Jason E-mail: sales@qdvenit.com

Website: WWW.QDVENIT.COM



Rigging Edition

VENIT

索具版本







1000TONS AIR PRESS MACHINE



AUTOMATIC HEAT TREATMENT LINE

Strictly control quality

FACTORY PHOTO



EDM CUTTING MACHINE



AUTOMATIC POWDER COATED LINE



CNC MILLING MACHINE

Strictly control quality



A. HARDNESS TESTING MACHINE
B. 200TONS TESTING MACHINE
C.D.E.F.WORKSHOP

一：钩子 Hook.....	1-13
二：卸扣 Shackle.....	14-19
三：紧索具 Load binder.....	20-25
四：花兰 Turnbuck.....	26-32
五：吊环、旋转环	
Eye bolts & nut Swivels.....	33-40
六：环类 Link.....	41-44
七：其它类 Others.....	45-49

VENIT

钩子 HOOKS

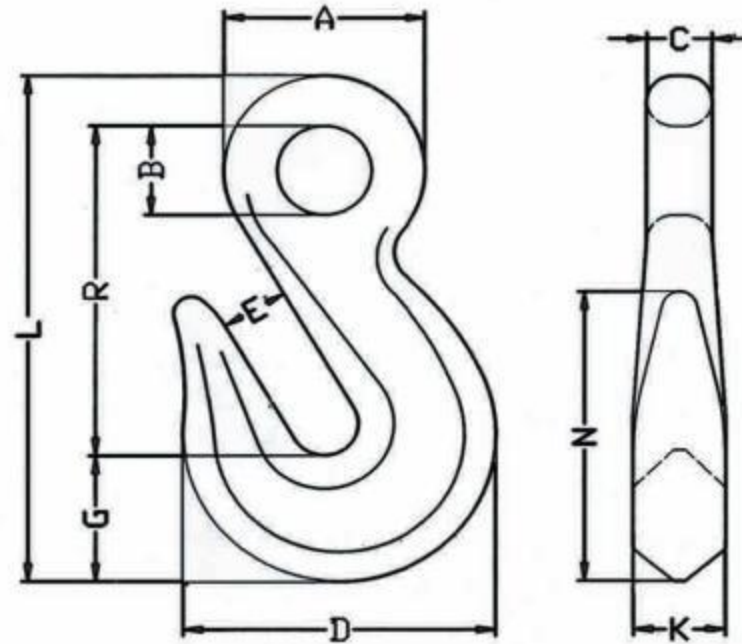


HOOKS



眼形抓钩 EYE GRAB HOOK

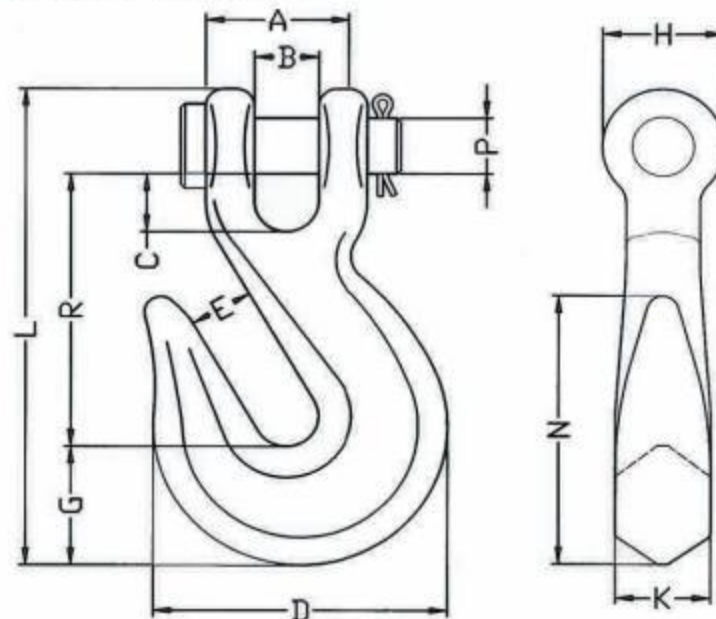
- Available with G43 or G70
- Forged-Quenched and Tempered
- Ultimate Load at 4 times the Working Load Limit
- Finishing: Zinc Plated, Yellow Chromate or Powder Coated
- Packing with Carton Box



SIZE	WLL (lbs)		WEIGHT (lbs)	DIMENSION(in)									
	H-323	A-323		A	B	C	D	E	G	K	L	N	R
1/4	2600	3500	0.28	1.09	0.53	0.31	1.81	0.34	0.88	0.47	3.05	1.75	1.88
5/16	3900	4700	0.45	1.31	0.62	0.38	2.12	0.44	0.97	0.59	3.59	2.06	2.28
3/8	5400	7100	0.79	1.56	0.75	0.44	2.53	0.5	1.17	0.72	4.28	2.34	2.69
1/2	9200	12000	1.75	1.94	0.88	0.53	3.56	0.66	1.53	0.78	5.44	2.97	3.38
5/8	13000	15800	3.25	2.38	1.06	0.66	4.41	0.78	1.89	1	6.66	3.78	4.11
3/4	20200	24700	5.94	2.88	1.38	0.75	5.22	0.94	2.13	1.31	8.06	5.09	5.16

羊角抓钩 CLEVIS GRAB HOOK

- Available with G43 or G70
- Forged-Quenched and Tempered
- Ultimate Load at 4 times the Working Load Limit
- Finishing: Zinc Plated, Yellow Chromate or Powder Coated
- Packing with Carton Box

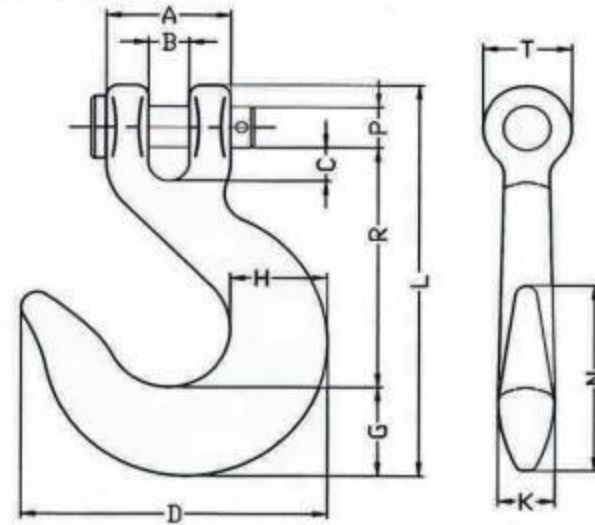


SIZE	WLL (lbs)		WEIGHT (lbs)	DIMENSION(in)											
	H-330	A-330		A	B	C	D	E	G	H	K	L	N	P	R
1/4	2600	3500	0.36	1	0.32	0.31	1.81	0.34	0.88	0.72	0.47	3.05	1.75	0.31	1.64
5/16	3900	4700	0.62	1.22	0.43	0.36	2.12	0.44	0.97	0.91	0.59	3.66	2.06	0.38	2.02
3/8	5400	7100	1	1.42	0.48	0.49	2.53	0.5	1.17	1	0.72	4.42	2.34	0.44	2.41
7/16	7200	8750	1.31	1.66	0.66	0.62	3.09	0.56	1.31	1.13	0.69	4.94	2.66	0.56	2.75
1/2	9200	12000	2.22	1.88	0.57	0.51	3.56	0.66	1.53	1.25	0.78	5.72	2.97	0.63	3.19
5/8	13000	15800	4.41	2.31	0.71	0.67	4.39	0.78	1.78	1.56	1.09	6.83	4.31	0.75	4.09
3/4	20200	24700	6.5	2.62	0.94	0.94	5.22	0.94	2.13	1.88	1.31	8.13	5.09	0.88	4.63

羊角滑钩带舌片或不带舌片

■ CLEVIS SLIP HOOK WITH OR WITHOUT LATCH

- Available with G43 or G70
- Forged-Quenched and Tempered
- Ultimate Load at 4 times the Working Load Limit
- Finishing: Zinc Plated, Yellow Chromate or Powder Coated
- Packing with Carton Box

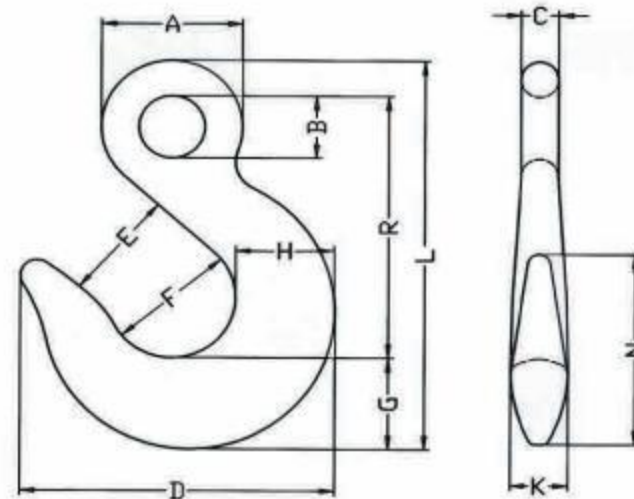


SIZE	WLL (lbs)		WEIGHT (lbs)	DIMENSION (in)														
	H-331	A-331		A	B	C	D	E	F	G	H	K	L	N	P	R	T	
1/4	1950	2750	0.55	1.06	0.32	0.29	2.75	0.94	1.19	0.81	0.88	0.5	3.95	2.13	0.38	2.58	0.81	
5/16	2875	4300	0.79	1.22	0.43	0.34	3.06	1.06	1.25	0.94	1	0.56	4.52	2.25	0.44	2.87	0.97	
3/8	4000	5250	1.21	1.38	0.45	0.44	3.63	1.31	1.5	1.13	1.19	0.66	5.15	2.56	0.47	3.25	1.06	
7/16	5000	7000	2.06	1.73	0.59	0.6	4.34	1.56	1.81	1.38	1.44	0.81	5.97	3.06	0.56	3.7	1.19	
1/2	6500	9000	2.75	1.88	0.57	0.53	4.81	1.69	1.94	1.56	1.63	0.91	6.53	3.44	0.63	4	1.31	
5/8	9250	13500	4.75	2.31	0.71	0.71	5.63	2	2.38	1.81	1.94	1.09	7.89	4	0.75	4.94	1.56	
3/4	12500	19250	11.28	3.19	1.18	1.29	7.38	2.5	3	2.38	2.5	1.44	10.02	5.06	0.88	6.09	2.09	

眼形滑钩带舌片或不带舌片

■ EYE SLIP HOOK WITH OR WITHOUT LATCH

- Available with G43 or G70
- Forged-Quenched and Tempered
- Ultimate Load at 4 times the Working Load Limit
- Finishing: Zinc Plated, Yellow Chromate or Powder Coated
- Packing with Carton Box



SIZE	WLL (lbs)		WEIGHT (lbs)	DIMENSION (in)											
	H-324	A-324		A	B	C	D	E	F	G	H	K	L	N	R
1/4	1950	2750	0.4	1.06	0.5	0.28	2.75	0.94	1.19	0.81	0.88	0.5	3.66	3.13	2.56
5/16	2875	4300	0.64	1.25	0.63	0.34	3.06	1.06	1.25	0.94	1	0.56	4.23	2.25	2.95
3/8	4000	5250	1.1	1.53	0.72	0.41	3.63	1.31	1.5	1.13	1.19	0.66	4.89	2.56	3.36
7/16	5000	7000	1.56	1.69	0.81	0.44	4.34	1.56	1.81	1.38	1.44	0.81	5.7	3.06	3.88
1/2	6500	9000	2.09	1.94	0.94	0.5	4.81	1.69	1.94	1.56	1.63	0.91	6.34	3.44	4.28
5/8	9250	13500	3.9	2.38	1.13	0.63	5.63	2	2.38	1.81	1.94	1.09	7.66	4	5.22

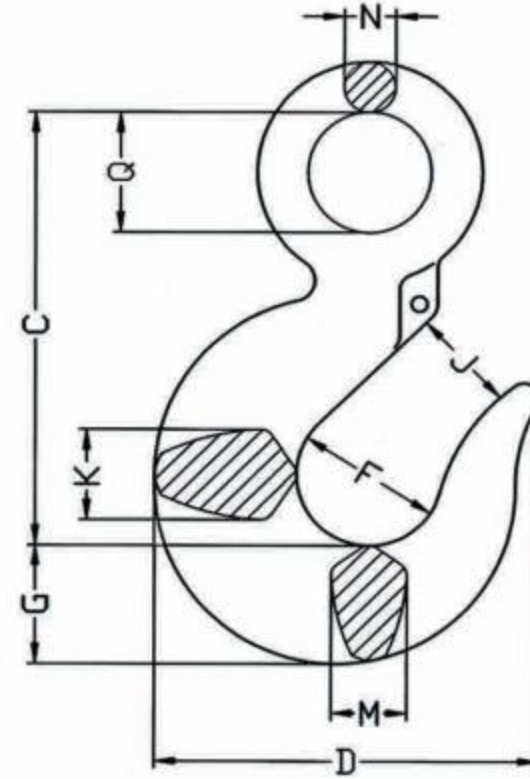
HOOKS



320美式货钩

■ EYE HOIST HOOK WITH OR WITHOUT LATCH

- Available with Carbon and Alloy steel
- Forged-Quenched and Tempered
- Ultimate Load at 5 times the Working Load Limit
- Finishing: Zinc Plated, Yellow Chromate or Powder Coated
- Packing with Carton Box

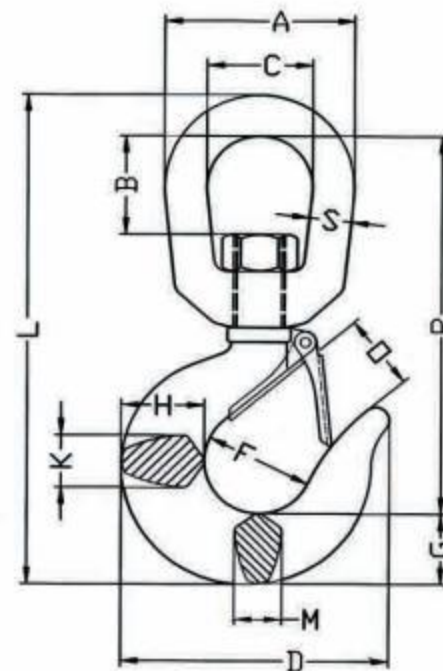


SIZE		WEIGHT (lbs)	DIMENSION(in)							
320C	320A		C	D	F	G	J	K	M	N
3/4T	1T	0.61	3.34	2.83	1.25	0.73	0.9	0.63	0.63	0.36
1T	1-1/2T	0.89	3.81	3.11	1.38	0.84	0.93	0.71	0.71	0.42
1-1/2T	2T	1.44	4.14	3.53	1.5	1	1	0.88	0.88	0.55
2T	3T	2.07	4.69	3.97	1.63	1.13	1.13	0.94	0.94	0.58
3T	5T	4.3	5.77	4.81	2	1.44	1.47	1.31	1.31	0.72
5T	7T	8.3	7.37	6.27	2.5	1.81	1.75	1.66	1.66	0.9
7-1/2T	11T	15	9.07	7.45	3	2.25	2.29	1.88	1.63	1.11
10T	15T	21.6	10.08	8.3	3.25	2.59	2.5	2.19	1.94	1.27
15T	22T	39.5	12.53	10.3	4.25	3	3.3	2.69	2.38	1.56

322美式旋转钩

■ SWIVEL HOIST HOOK WITH OR WITHOUT LATCH

- Available with Carbon and Alloy steel
- Forged-Quenched and Tempered
- Ultimate Load at 5 times the Working Load Limit
- Finishing: Zinc Plated, Yellow Chromate or Powder Coated
- Packing with Carton Box

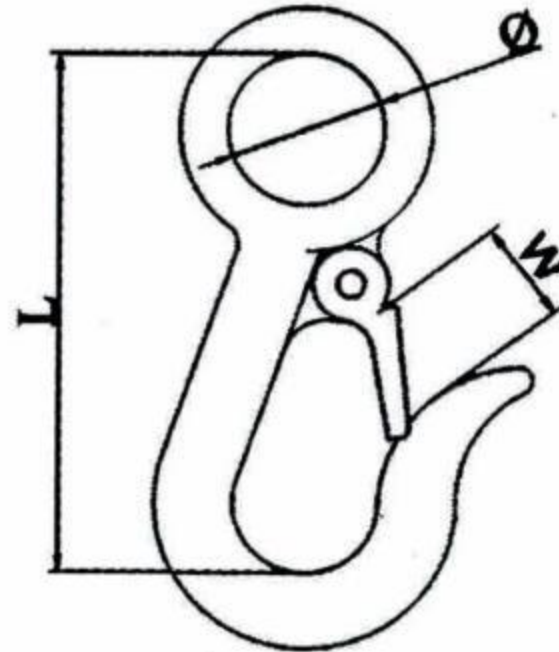


SIZE		WEIGHT (lbs)	DIMENSION(in)												
322C	322A		A	B	C	D	F	G	H	K	L	M	O	R	S
3/4T	1T	0.75	2	0.82	1.25	2.86	1.25	0.73	0.81	0.63	5.66	0.63	0.89	4.55	0.38
1T	1-1/2T	1.25	2.5	1.31	1.5	3.15	1.38	0.84	0.94	0.71	6.71	0.71	0.91	5.37	0.5
1-1/2T	2T	2.25	3	1.5	1.75	3.59	1.5	1	1.16	0.88	7.75	0.88	1	6.12	0.63
2T	3T	2.3	3	1.5	1.75	4	1.62	1.13	1.31	0.94	8.25	0.94	1.09	6.5	0.63
3T	5T	4.96	3.5	1.64	2	4.84	2	1.44	1.63	1.31	9.69	1.13	1.36	7.5	0.75
5T	7T	10.29	4.56	2.29	2.5	6.28	2.5	1.81	2.06	1.66	12.47	1.44	1.61	9.63	1
7-1/2T	11T	16.18	5	2.53	2.75	7.54	3	2.25	2.63	1.88	14.75	1.63	2.08	11.37	1.13
10T	15T	23.25	5.62	2.48	3.12	8.34	3.25	2.59	2.94	2.19	16.4	1.94	2.27	12.25	1.25

锻造钩

FORGED SNAP HOOK

- Available with Carbon steel
- Forged-Quenched and Tempered
- Ultimate Load at 4 times the Working Load Limit
- Finishing: Zinc Plated
- Packing with Carton Box

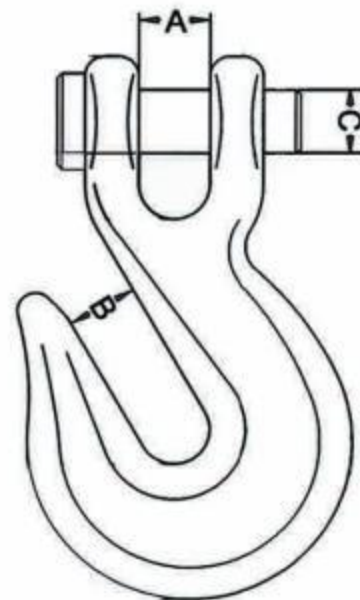
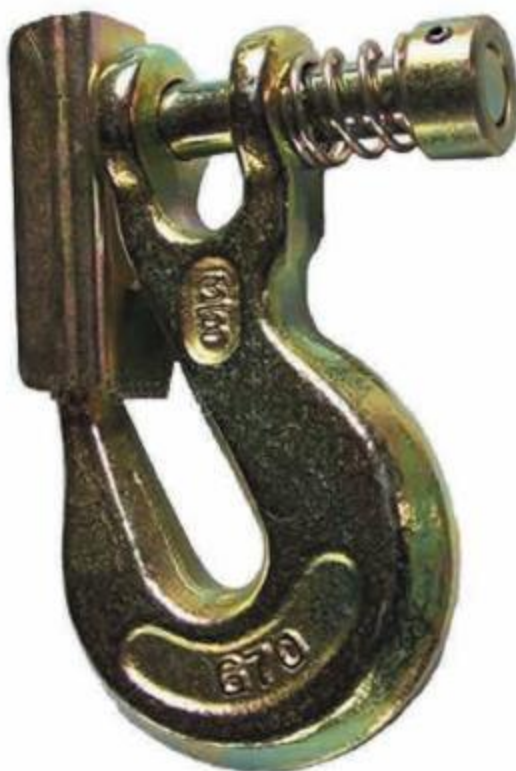


SIZE (in)	WLL (lbs)	WEIGHT (kg)	DIMENSION(mm)		
			L	W	φ
7/16	750	0.11	82.5	20	19
9/16	1000	0.23	97.5	20	28

防脱链羊角抓钩

CLEVIS GRAB HOOK WITH SAFETY LATCH

- Available with G43 or G70
- Forged-Quenched and Tempered
- Ultimate Load at 4 times the Working Load Limit
- Finishing: Zinc Plated, Yellow Chromate or Powder Coated
- Packing with Carton Box



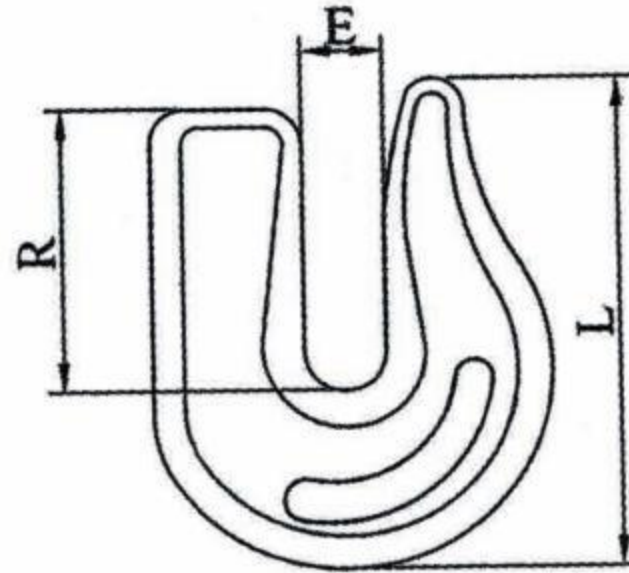
SIZE (in)	WLL (lbs)		WEIGHT (kg)	DIMENSION(in)		
	CARBON	ALLOY		A	B	C
1/4	2600	3500	0.28	0.36	0.40	0.38
5/16	3900	4700	0.43	0.40	0.44	0.44
3/8	5400	7100	0.58	0.48	0.50	0.47
7/16	7200	8750	0.70	0.66	0.56	0.56
1/2	9200	12000	1.18	0.75	0.66	0.63
5/8	13000	15800	2.12	0.91	0.78	0.75
3/4	20200	24700	2.95	0.94	0.94	0.88

HOOKS



美式焊接钩 WELDED HOOK

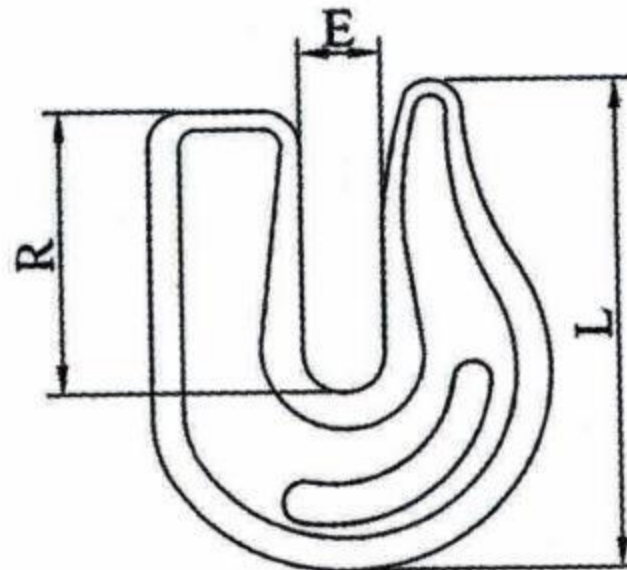
- Available with Carbon steel
- Forged-Quenched and Tempered
- Ultimate Load at 4 times the Working Load Limit
- Finishing: Self-color, Zinc Plated
- Packing with Carton Box



SIZE (in)	WLL (lbs)	WEIGHT (kg)	DIMENSION(in)		
			E	L	R
5/16	3900	0.19	11	54	31
3/8	9200	0.38	16.5	85	44
1/2	12750	0.86	20.5	102	51

B/A 焊接钩 WELDED HOOK

- Available with Alloy steel
- Forged-Quenched and Tempered
- Ultimate Load at 4 times the Working Load Limit
- Finishing: Self-color, Zinc Plated
- Packing with Carton Box



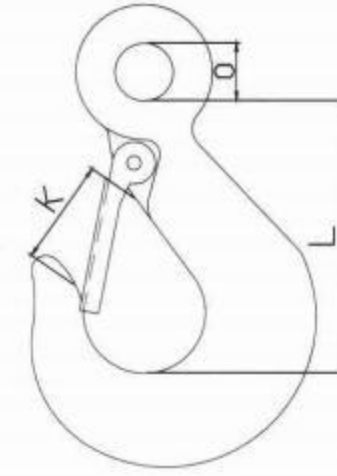
SIZE (in)	WLL (lbs)	WEIGHT (kg)	DIMENSION(in)		
			E	L	R
5/16	4700	0.21	11	64	39
3/8	6600	0.40	13	76	44
1/2	11300	0.79	17	99	60

DIN 689钩 ■ DIN 689 HOOK

Forged Carbon Steel

Ultimate Load is 4 times Working Load Limit

Working Load(t)	DIMENSIONS(MM)			Weight(kgs)
	O	K	L	
0.25	12	18	64	0.16
0.5	16	24	85	0.36
1	26	39	138	0.88
1.6	32	49	174	1.4
2.5	36	54	190	3.05
3.2	40	62	219	5.85
5	46	69	246	8.3
6.3	52	78	277	11.7



319 直杆钩 ■ SHANK HOOKS

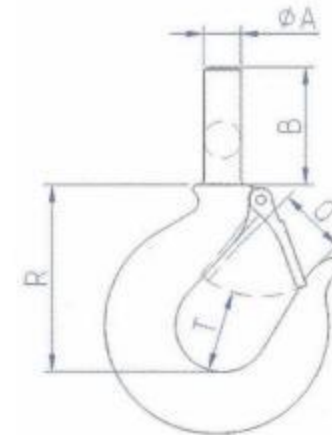
SHANK HOOKS WITH LATCHES

Forged Carbon or Alloy Steel

Proof Load is 2 times Working Load Limit

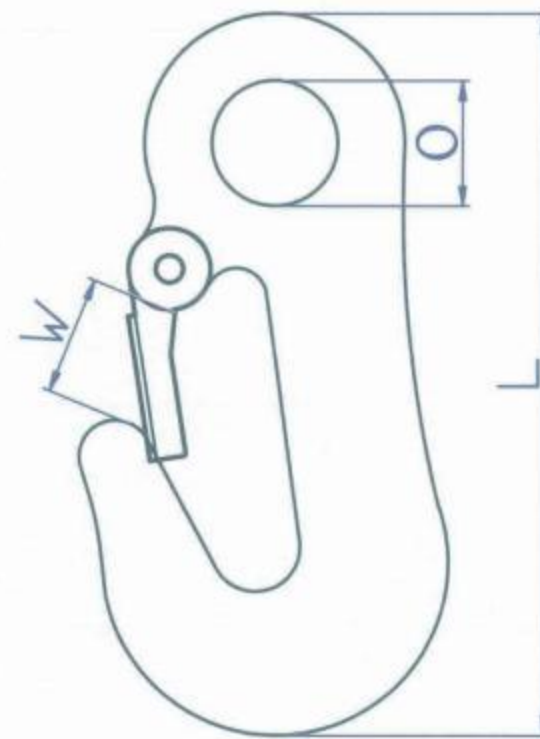
Ultimate Load is 5 times of the Working Load Limit

DIMENSIONS(IN)					W.L.L.(T)		Weight(kgs)
A	B	O	R	T	Carbon	Alloy	
15	50.8	22.3	57.8	19.5	0.75	1	0.29
16.7	57.2	23.2	64.2	20.5	1	1-1/2	0.45
18.3	63.5	25.4	68.2	21	1-1/2	2	0.47
22.3	69.9	28.4	77.6	30.2	2	3	0.86
29.4	82.5	34	95.9	35.1	3	4-1/2	1.78
35.8	95.2	42.9	120.5	45.2	5	7	3.35
42.9	107.8	52.3	149.1	53.5	7-1/2	11	5.98
44.5	114.3	57.9	162.6	63.5	10	15	8.88



绞车钩

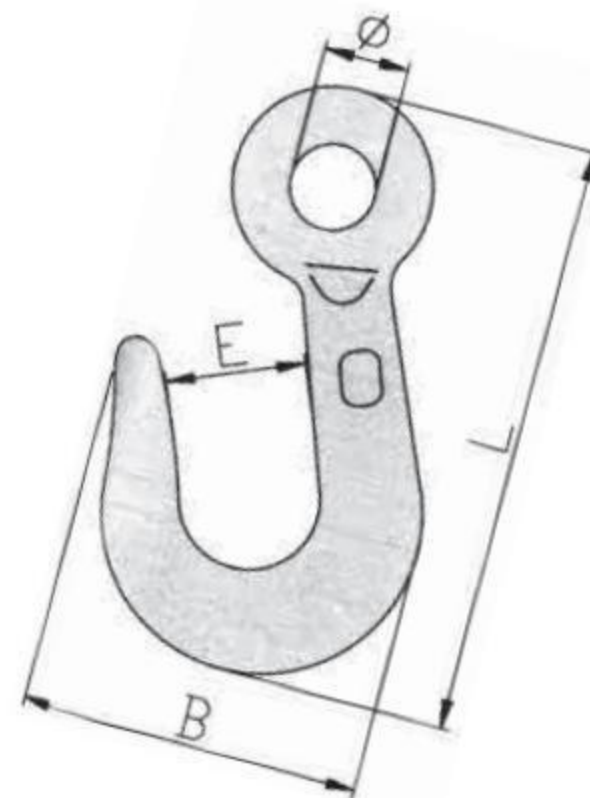
■ WINCH HOOK



Chain Size		DIMENSIONS(mm)			M.B.S.(T)	Weight(kgs)
in	mm	L	O	W		
5/8	16	110	19	18	2.7	0.24

普通农钩

■ AGRICULTURAL HOOK

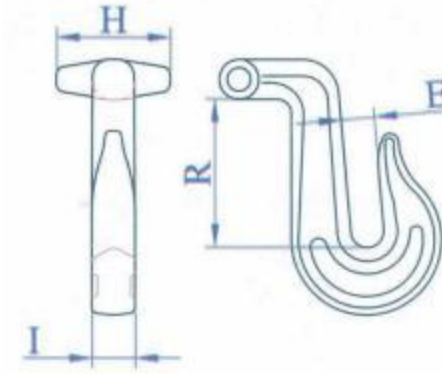


SIZE	WEIGHT/kg	WLL/T	N±0.5	B±1	E±0.6	L±1
50	0.04	0.4	8.5	34	13	56
60	0.06	0.6	9.5	41	16	70
70	0.095	1	11	45.5	13	80
80	0.13	1.2	11	54	17	90
90	0.196	1.8	12.5	58	18	102
100	0.3	2.4	12.5	62	19	114.5
120	0.33	2.8	15.5	62	20	118

牛角钩

■ T GRAB HOOK

Grab Hook with T type Handle
Forged Alloy Steel
Quenched & Tempered

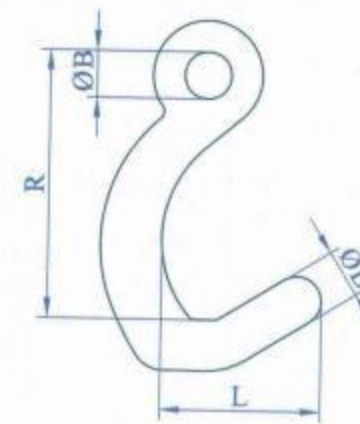


Size(in)	M.B.S.(lbs)	Dimensions(mm)				Weight(kg)
		E	H	I	R	
5/16"	18800	12	41	15.5	53	0.36

眼形镰钩

■ FALCATE HOOKS

Forged Alloy Steel
Quenched&Tempered.



Dimensions(in.)				M.B.S.(lbs)	Weight(lbs)
B	D	L	R		
0.55	0.55	1.86	3.35	15.600	0.55
0.56	0.59	1.92	3.21	18.800	0.66

牵引钩

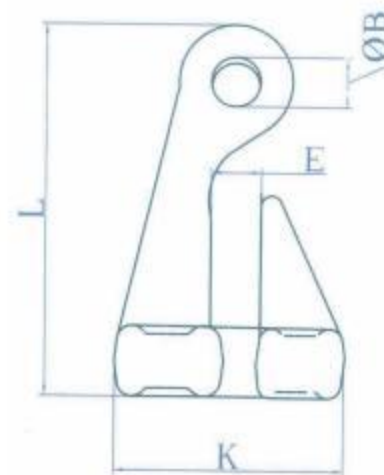
■ TRAILER HOOK



Size		WLL (t)	DIMENSIONS(MM)			Weight(kgs)
in	mm		L	O	W	
3/4	19	0.5	71.3	19	16.5	0.2
5/8	16	1	55	16	18	0.26
5/8-X	16-X	1.5	93	16	22	0.35
5/8-XX	16-XX	2	100	16	23	0.39

单眼弯钩

■ EYE BEND HOOK



Forged Alloy Steel
Quenched & Tempered

Chain Size		M.B.S.(lbs)	DIMENSIONS(in)				Weight(lbs)
in	mm		B	E	K	L	
5/16"	8	10000	0.51	0.41	2.24	3.07	0.81
3/8"	10	35250	0.87	0.61	3.43	4.09	2.80
3/8"	12	26400	0.65	0.51	2.79	3.42	1.72

羊角弯钩

CLEVIS GRAB BEND HOOK



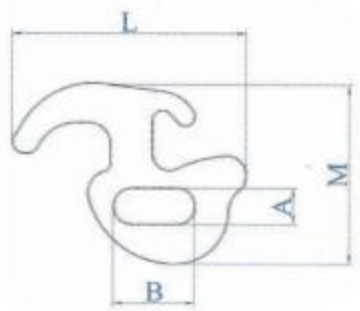
Forged Alloy Steel
Quenched & Tempered

Chain Size		M.B.S.(T)	DIMENSIONS(MM)		Weight(kgs)
in	mm		Grab open	O.L.	
5/16"	8	4.54	10.5	78	0.38

RTJ钩

CLUSTER HOOK RTJ HOOK

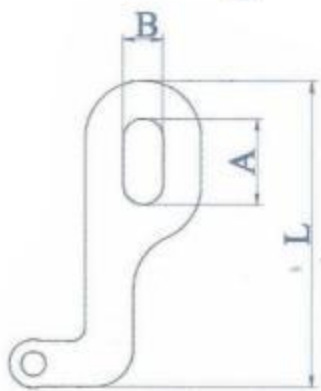
Hooks Forged Carbon Steel
Weight: 1.03kgs
Breaking Strength 5.3 tons



R型钩

"R" TYPE HOOK Forged Carbon or Alloy S

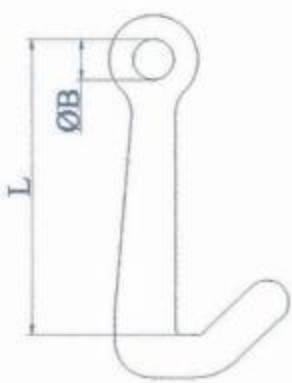
Chain Size		DIMENSIONS(MM)				M.B.S.(T)		Weitht(kgs)
in	mm	A	B	L	M	Carbon	Alloy	
5/16"	8	14.4	26	85.2	66.5	5.3	8.5	0.3



T型钩

"T"TYPE HOOK Forged Carbon or Alloy Steel

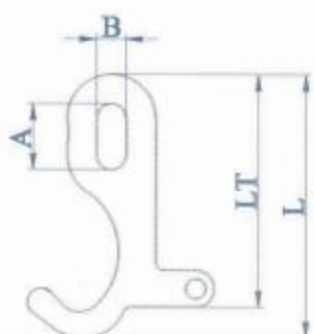
Chain Size		DIMENSIONS(MM)			M.B.S.(T)		Weitht(kgs)
in	mm	A	B	L	Carbon	Alloy	
5/16"	8	28.9	14.2	101	7.1	8.5	0.26



小J形钩

SMALL J HOOK

Chain Size		DIMENSIONS(MM)		M.B.S.(T)	Weight(kgs)
in	mm	L	B		
5/16"-3/8"	7-8	104	14.5	8.5	0.32



T-J钩

"T-J"TYPE HOOK Forged Carbon or Alloy St

Chain Size		DIMENSIONS(MM)				M.B.S.(T)		Weitht(kgs)
in	mm	A	B	L	LT	Carbon	Alloy	
5/16"	8	28.4	12.7	114	100.5	5.1	7.1	0.35

圆孔“J”形钩

■ "J"TYPE HOOKS WITH ROUND HOLE



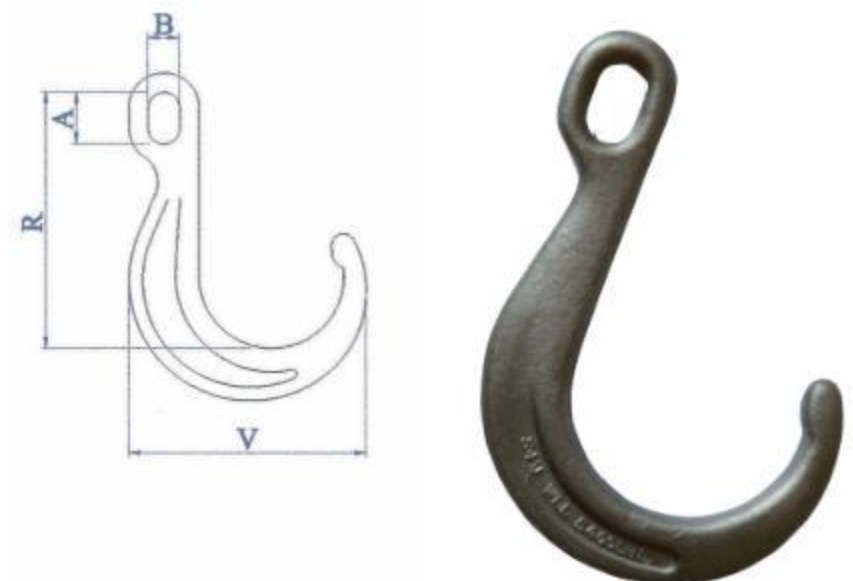
Forged Alloy Steel

Ultimate Load is 4 times Working Load Limit

Size	DIMENSIONS(mm)				WLL (lbs)	Weight(kgs)
	in	mm	L	O		
8	202	171	19	105.5	5400	1.31
15	380	348	19	105.5	5400	2.22

长方孔“J”形钩

■ "J"TYPE HOOKS WITH ELLIPSE HOLE



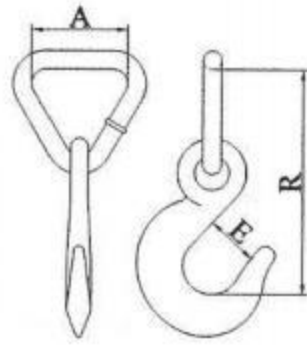
Forged Alloy Steel

Ultimate Load is 4 times Working Load Limit

Size of Chain		DIMENSIONS(mm)				WLL (lbs)	Weight(kgs)
in	mm	A	B	R	V		
8	202	32	19.5	162	146	5400	1.5
15	380	32	19.5	319	146	5400	2

焊接三角环钩

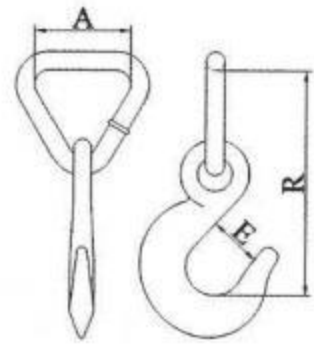
■ EYE SLIP HOOK WITH TRIANGLE LINK



SIZE (mm)	DIMENSION(mm)					M.B.S. (t)	Weight (kgs)
	B	D	E	R	T		
58	58	70	20	133	18	5	0.54
83	83	70	20	155	18	5	0.60

眼形滑钩配三角环

■ EYE SLIP HOOK WITH TRIANGLE LINK

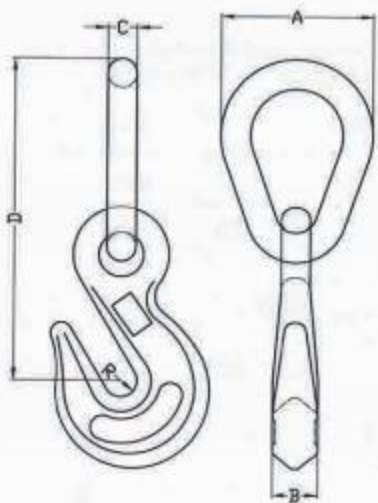


SIZE (mm)	DIMENSION (mm)			M.B.S. (t)	Weight (kgs)
	A	E	R		
13	60	36	156	5	0.71

眼形抓钩配梨形环

■ SGH HOOK

- Forged-Quenched and Tempered
- Ultimate Load at 4 times the Working Load Limit
- Finishing: Yellow zinc
- Packing with Carton Box



SIZE	DIMENSION(in)				
	A	B	C	D	R
3/8	2.46	0.67	0.46	5.11	0.45



卸扣 SHACKLE

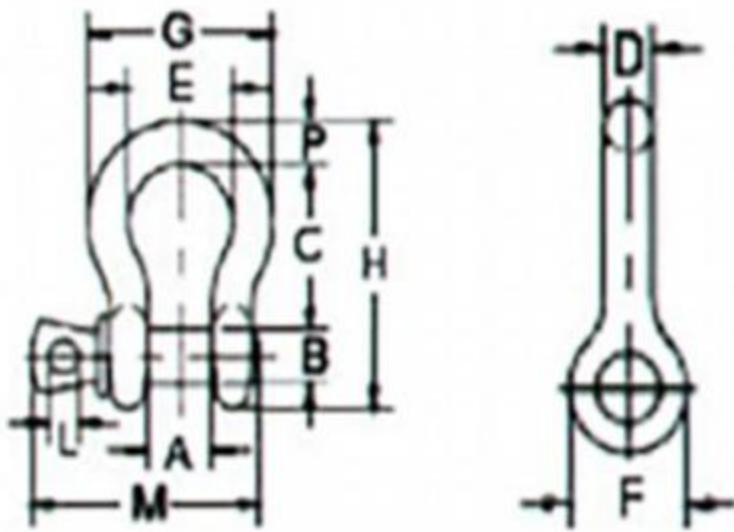


G209 美式模鍛卸扣

■ US TYPE SCREW PIN ANCHOR SHACKLE



- Meets performance requirements of US Fed.Spec.RR-C271D Type IVA Grade A, Class 2
- Forged-Quenched and Tempered with Alloy Pin
- Ultimate Load at 6 times the Working Load Limit
- Hot Dip Galvanized according to ASTM A153, Powder Coated or Self-Colored
- Material Certificates and Testing Certificates available when requested at the time of order
- Packing available with Carton Box or Gunny Bag



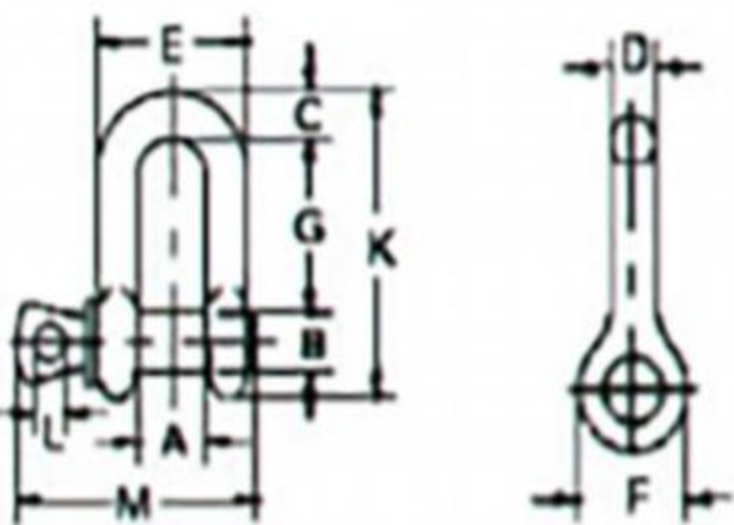
Min-Max Chain Size (in.)	Working Load Limit(t)	Dimensions(mm)											Weight Each (kg)
		A	B	C	D	E	F	G	H	L	M	P	
3/16	1/3	9.65	6.35	22.4	4.85	15.2	14.2	24.9	37.3	4.06	28.4	4.85	0.03
1/4	1/2	11.9	7.85	28.7	6.35	19.8	15.5	32.5	45.2	4.85	35.1	6.35	0.05
5/16	3/4	13.5	9.65	31.0	7.85	21.3	19.1	37.3	53.0	5.60	42.2	7.85	0.09
3/8	1	16.8	11.2	36.6	9.65	26.2	23.1	45.2	63.0	6.35	51.5	9.65	0.14
7/16	1-1/2	9.1	12.7	42.9	11.2	29.5	26.9	51.5	74.0	7.85	60.5	11.2	0.17
1/2	2	20.6	16.0	47.8	12.7	33.3	30.2	58.5	83.5	9.65	68.5	12.7	0.33
5/8	3-1/4	26.9	19.1	60.5	16.0	42.9	38.1	74.5	106	11.2	85.0	17.5	0.62
3/4	4-3/4	31.8	22.4	71.5	19.1	51.0	46.0	89.0	126	12.7	101	20.6	1.07
7/8	6-1/2	36.6	25.4	84.0	22.4	58.0	53.0	102	148	12.7	114	24.6	1.64
1	8-1/2	42.9	28.7	95.5	25.4	68.5	60.5	119	167	14.2	129	26.9	2.28
1-1/8	9-1/2	46.0	31.8	108	29.5	74.0	68.5	131	190	16.0	142	31.8	3.36
1-1/4	12	51.5	35.1	119	32.8	82.5	76.0	148	210	17.5	156	35.1	4.31
1-3/8	13-1/2	57.0	38.1	133	36.1	92.0	84.0	162	233	19.1	174	38.1	6.14
1-1/2	17	60.5	41.4	146	39.1	98.5	92.0	175	254	20.6	187	41.1	7.80
1-3/4	25	73.0	51.0	178	46.7	127	106	225	313	25.4	231	57.0	12.6
2	35	82.5	57.0	197	53.0	146	122	253	348	31.0	263	61.0	20.4
2-1/2	55	105	70.0	267	69.0	184	145	327	453	35.1	330	79.5	38.9

G210 美式模鍛卸扣

■ US TYPE SCREW PIN CHAIN SHACKLE



- Meets performance requirements of US Fed.Spec.RR-C271D Type IVB Grade A, Class 2
- Forged-Quenched and Tempered with Alloy Pin
- Ultimate Load at 6 times the Working Load Limit
- Hot Dip Galvanized according to ASTM A153, Powder Coated or Self-Colored
- Material Certificates and Testing Certificates available when requested at the time of order
- Packing available with Carton Box or Gunny Bag



Min-Max Chain Size (in.)	Working Load Limit(t)	Dimensions(mm)										Weight Each (kg)
		A	B	C	D	E	F	G	K	L	M	
1/4	1/2	11.9	7.85	6.35	6.35	24.6	15.5	22.4	40.4	4.85	35.1	0.05
5/16	3/4	13.5	9.65	7.85	7.85	29.5	19.1	26.2	48.5	5.60	42.2	0.08
3/8	1	16.8	11.2	9.65	9.65	35.8	23.1	31.8	58.5	6.35	51.5	0.13
7/16	1-1/2	19.1	12.7	11.2	11.2	41.4	26.9	36.6	67.5	7.85	60.5	0.20
1/2	2	20.6	16.0	12.7	12.7	46.0	30.2	41.4	77.0	9.65	68.5	0.27
5/8	3-1/4	26.9	19.1	15.7	15.7	58.5	38.1	51.0	95.5	11.2	85.0	0.57
3/4	4-3/4	31.8	22.4	20.6	20.6	70.0	46.0	60.5	115	12.7	101	1.20
7/8	6-1/2	36.6	25.4	24.6	24.6	81.0	53.0	71.5	135	12.7	114	1.43
1	8-1/2	42.9	28.7	25.4	25.4	93.5	60.5	81	151	14.2	129	2.15
1-1/8	9-1/2	46.0	31.8	31.8	28.7	103	68.5	91.0	172	16.0	142	3.06
1-1/4	12	51.5	35.1	35.1	31.8	115	76.0	100	191	17.5	156	4.11
1-3/8	13-1/2	57.0	38.1	38.1	35.1	127	84.0	111	210	19.1	174	5.28
1-1/2	17	60.5	41.4	41.1	38.1	137	92.0	122	230	20.6	187	7.23
1-3/4	25	73.0	51.0	54.0	44.5	164	106	146	279	25.4	231	12.1
2	35	82.5	57.0	60.0	51.0	184	122	172	312	31.0	263	19.2
2-1/2	55	105	70.0	66.5	66.5	238	145	203	377	35.1	330	32.5

SHACKLE

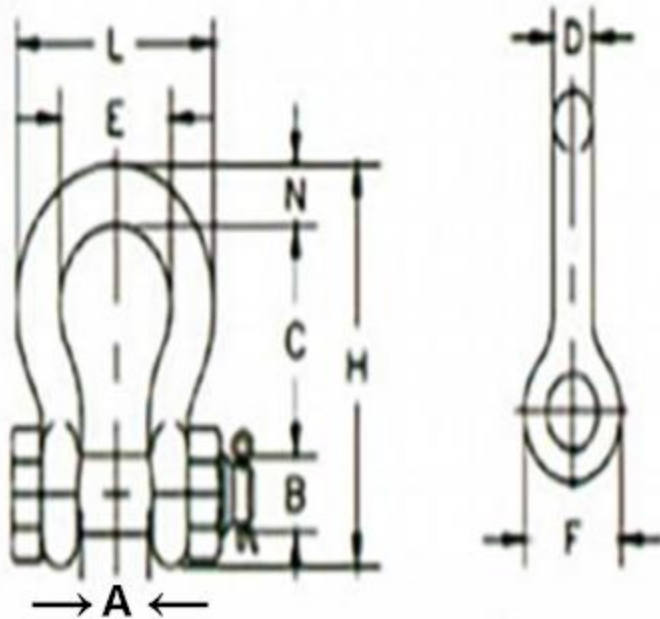


G2130美式模锻卸扣

■ US TYPE BOLT & NUT PIN ANCHOR SHACKLE



- Meets performance requirements of US Fed.Spec.RR-C271D Type IVA Grade A, Class 3
- Forged-Quenched and Tempered with Alloy Pin
- Ultimate Load at 6 times the Working Load Limit
- Hot Dip Galvanized according to ASTM A153, Powder Coated or Self-Colored
- Material Certificates and Testing Certificates available when requested at the time of order
- Packing available with Carton Box or Gunny Bag



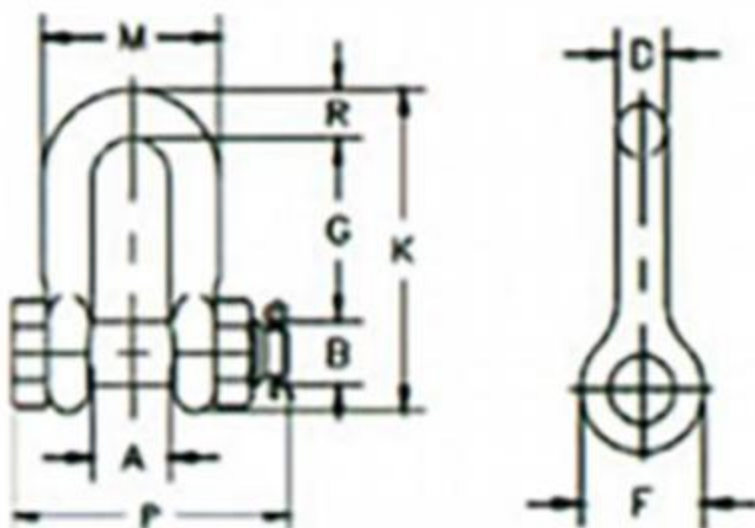
Min-Max Chain Size (in.)	Working Load Limit(t)	Dimensions(mm)										Weight Each (kg)
		A	B	C	D	E	F	N	H	L		
3/16	1/3	9.65	6.35	22.4	4.85	15.2	14.2	4.85	37.3	24.9	0.03	
1/4	1/2	11.9	7.85	28.7	6.35	19.8	15.5	6.35	46.7	32.5	0.05	
5/16	3/4	13.5	9.65	31.0	7.85	21.3	19.1	7.85	53.0	37.3	0.10	
3/8	1	16.8	11.2	36.6	9.65	26.2	23.1	9.65	63.0	45.2	0.15	
7/16	1-1/2	19.1	12.7	42.9	11.2	29.5	26.9	11.2	74.0	51.5	0.22	
1/2	2	20.6	16.0	47.8	12.7	33.3	30.2	12.7	83.5	58.5	0.36	
5/8	3-1/4	26.9	19.1	60.5	16.0	42.9	38.1	17.5	106	74.5	0.62	
3/4	4-3/4	31.8	22.4	71.5	19.1	51.0	46.0	20.6	126	89.0	1.23	
7/8	6-1/2	36.6	25.4	84.0	22.4	58.0	53.0	24.6	148	102	1.79	
1	8-1/2	42.9	28.7	95.5	25.4	68.5	60.5	26.9	167	119	2.28	
1-1/8	9-1/2	46.0	31.8	108	28.7	74.0	68.5	31.8	190	131	3.75	
1-1/4	12	51.5	35.1	119	31.8	82.5	76.0	35.1	210	146	5.31	
1-3/8	13-1/2	57.0	38.1	133	35.1	92.0	84.0	38.1	233	162	7.18	
1-1/2	17	60.5	41.4	146	38.1	98.5	92.0	41.1	254	175	8.62	
1-3/4	25	73.0	51.0	178	44.5	127	106	57.0	313	225	15.4	
2	35	82.5	57.0	197	51.0	146	122	61.0	348	253	23.7	
2-1/2	55	105	70.0	267	66.5	184	145	79.5	453	327	44.6	
3	85	127	82.5	330	76	200	165	92.0	546	365	70	
3-1/2	120	133	95.5	372	92	229	203	105	626	419	120	
4	150	140	108	368	104	254	229	116	653	468	153	

G2150美式模锻卸扣

■ US TYPE BOLT & NUT PIN CHAIN SHACKLE



- Meets performance requirements of US Fed.Spec.RR-C271D Type IVB Grade A, Class 3
- Forged-Quenched and Tempered with Alloy Pin
- Ultimate Load at 6 times the Working Load Limit
- Hot Dip Galvanized according to ASTM A153, Powder Coated or Self-Colored
- Material Certificates and Testing Certificates available when requested at the time of order
- Packing available with Carton Box or Gunny Bag



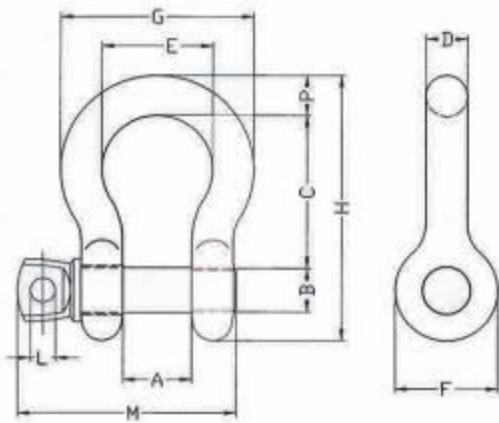
Min-Max Chain Size (in.)	Working Load Limit(t)	Dimensions(mm)										Weight Each (kg)
		A	B	D	F	G	K	M	P	R		
1/4	1/2	11.9	7.85	6.35	15.5	19.1	40.4	24.6	39.6	6.35	0.06	
5/16	3/4	13.5	9.65	7.85	19.1	25.4	48.5	29.5	46.2	7.85	0.10	
3/8	1	16.8	11.2	9.65	23.1	31.0	58.5	35.8	55	9.65	0.15	
7/16	1-1/2	19.1	12.7	11.2	26.9	36.1	67.5	41.1	63.5	11.2	0.22	
1/2	2	20.6	16.0	12.7	30.2	41.4	77.0	46.0	71.0	12.7	0.34	
5/8	3-1/4	26.9	19.1	15.7	38.1	51.0	95.5	58.5	89.5	16.0	0.67	
3/4	4-3/4	31.8	22.4	20.6	46.0	60.5	115	70.0	103	20.6	1.14	
7/8	6-1/2	36.6	25.4	24.6	53.0	71.5	136	71.0	120	24.6	1.74	
1	8-1/2	42.9	28.7	25.4	60.5	81.0	151	93.5	135	25.4	2.52	
1-1/8	9-1/2	46.0	31.8	31.8	68.5	91.0	172	103	150	31.8	3.45	
1-1/4	12	51.5	35.1	35.1	76.0	100	191	115	165	35.1	4.90	
1-3/8	13-1/2	57.0	38.1	38.1	84.0	111	210	127	183	38.1	6.24	
1-1/2	17	60.5	41.4	41.4	92.0	122	230	137	196	41.1	8.39	
1-3/4	25	73.0	51.0	51.0	106	146	279	162	230	54.0	14.2	
2	35	82.5	57.0	57.0	122	172	312	184	264	60.0	21.2	
2-1/2	55	105	70.0	70.0	145	203	377	238	344	66.5	38.6	
3	85	127	82.5	82.5	165	216	429	279	419	89.0	56	

美式合金钢卸扣

■ US TYPE SUPER ALLOY SCREW PIN ANCHOR SHACKLE



- Meets performance requirements of US Fed.Spec.RR-C271D Type IVA Grade A, Class 3
- Forged-Quenched and Tempered with Alloy Body and Pin
- Ultimate Load at 6 times the Working Load Limit
- Hot Dip Galvanized according to ASTM A153, Powder Coated or Self-Colored
- Material Certificates and Testing Certificates available when requested at the time of order
- Packing available with Carton Box or Gunny Bag



SIZE	WLL (T)	WEIGHT (lbs)	DIMENSION(in)											PACKAGE (pc)
			A	B	C	D	E	F	G	H	L	M	P	
3/8	2	0.31	0.67	0.44	1.44	0.39	1.03	0.98	1.81	2.54	0.22	2.11	0.39	200
7/16	2-2/3	0.38	0.73	0.50	1.69	0.44	1.16	1.06	2.03	2.90	0.24	2.32	0.43	100
1/2	3-1/3	0.72	0.81	0.62	1.88	0.50	1.31	1.22	2.32	3.31	0.30	2.76	0.50	75
5/8	5	1.37	1.06	0.75	2.36	0.63	1.69	1.57	2.95	4.15	0.35	3.44	0.63	40
3/4	7	2.35	1.26	0.87	2.81	0.75	2.01	1.89	3.50	4.94	0.39	3.98	0.75	20
7/8	9-1/2	3.62	1.46	0.98	3.33	0.87	2.28	2.13	4.02	5.75	0.41	4.57	0.87	15
1	12-1/2	5.03	1.71	1.10	3.79	1.04	2.70	2.36	4.67	6.51	0.47	5.33	0.98	10
1-1/8	15	7.41	1.89	1.26	4.29	1.14	2.95	2.68	5.24	7.40	0.59	5.71	1.14	8
1-1/4	18	9.5	2.09	1.38	4.74	1.26	3.31	2.99	5.83	8.19	0.65	6.30	1.26	5
1-3/8	21	13.53	2.32	1.50	5.28	1.38	3.70	3.31	6.46	9.06	0.75	7.01	1.38	4
1-1/2	30	17.2	2.44	1.65	5.85	1.50	3.90	3.62	6.89	9.98	0.83	7.64	1.50	3
1-3/4	40	27.78	2.95	1.97	7.01	1.77	5.04	4.17	8.62	11.87	0.91	8.98	1.77	2
2	55	45	3.31	2.20	7.76	2.05	5.83	4.80	9.92	13.31	0.98	10.04	2.05	1
2-1/2	85	85.75	4.21	2.76	10.61	2.60	7.32	5.71	12.52	17.44	1.30	12.48	2.64	1
3	120	148	5.12	3.15	12.8	2.99	8.07	6.5	14.09	20.77	1.65	14.75	3.15	1

SHACKLE

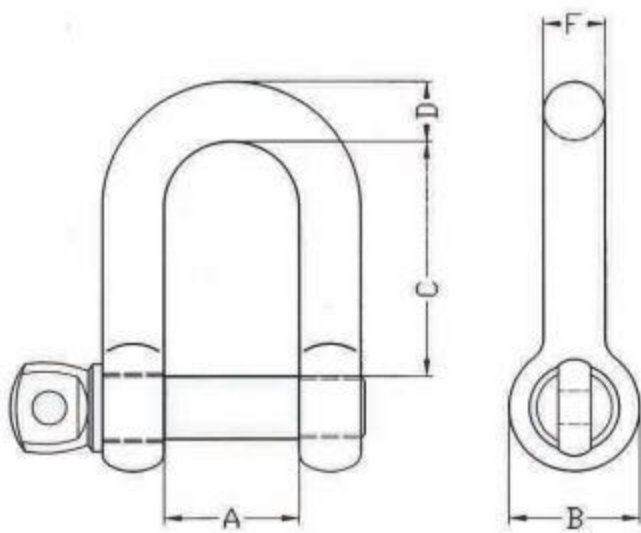


美式普通直形卸扣

■ US COMMERCIAL TYPE CHAIN SHACKLE



- Meets the performance of US Standard
- Material: Carbon 1015
- Finish: Electronic Galvanized or Hot Dip Galvanized
- Packing with Gunny Bag or Carton Box



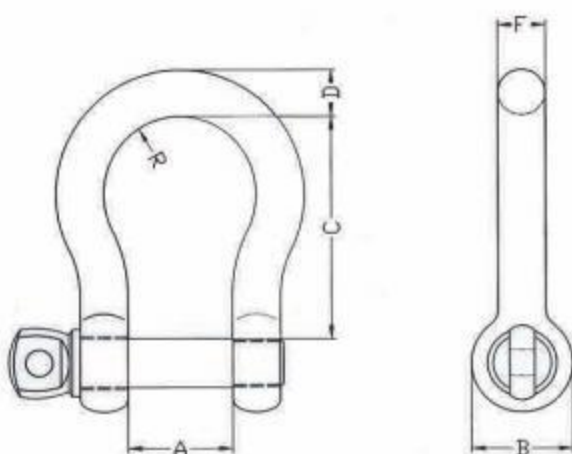
SIZE (in)	WEIGHT (kg)	DIMENSION(mm)		
		A	D	C
1/4	0.03	14.00	7.30	24.00
5/16	0.055	15.00	9.30	28.00
3/8	0.11	16.00	11.40	30.00
1/2	0.26	20.00	15.30	41.00
5/8	0.48	27.00	19.30	51.00
3/4	0.83	31.00	21.00	60.00
7/8	1.2	36.00	24.00	71.00
1	1.9	43.00	27.00	81.00
1-1/8	2.7	46.00	31.00	90.00
1-1/4	3.5	51.00	35.00	100.00
1-1/2	6.8	60.00	41.00	124.00

美式普通弓形卸扣

■ US COMMERCIAL TYPE ANCHOR SHACKLE



- Meets the performance of US Standard
- Material: Carbon 1015
- Finish: Electronic Galvanized or Hot Dip Galvanized
- Packing with Gunny Bag or Carton Box

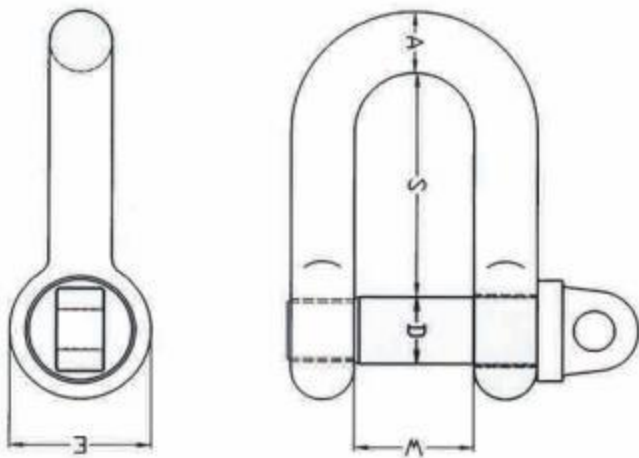


SIZE (in)	100/WEIGHT (kg)	DIMENSION(mm)				
		A	B	C	D	H
3/16	0.02	17.00	10.00	5.20	5.30	11.20
1/4	0.03	19.00	12.70	6.20	7.30	13.50
5/16	0.06	20.50	14.00	7.30	9.30	16.50
3/8	0.12	26.00	16.00	9.00	11.40	21.00
1/2	0.27	33.00	20.00	11.80	15.30	29.00
5/8	0.52	43.00	27.00	15.00	19.30	36.00
3/4	0.9	51.00	31.00	18.80	21.00	46.00
7/8	1.4	58.00	36.00	21.00	24.00	51.00
1	2.15	68.00	43.00	25.00	27.00	57.00
1-1/8	3	74.00	46.00	28.00	31.00	62.00
1-1/4	4	82.00	51.00	32.00	35.00	72.00
1-1/2	7.3	98.00	60.00	38.00	41.00	88.00

欧式D形卸扣 ■ EUROPEAN LARGE DEE SHACKLE



- Meets the performance of European Standard
- Material: Carbon 1015
- Finish: Electronic Galvanized or Hot Dip Galvanized
- Packing with Gunny Bag or Carton Box

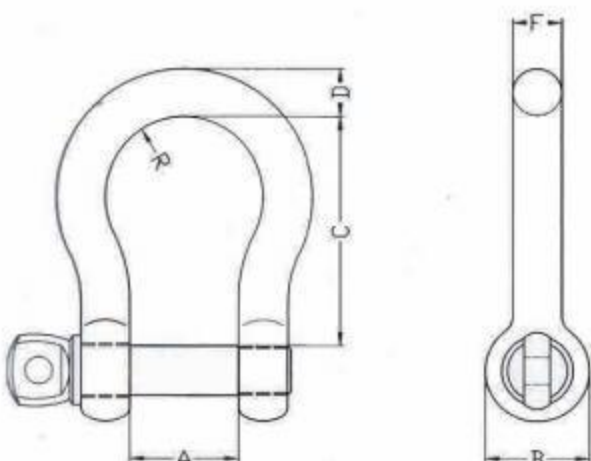


SIZE (mm)	SWL (Kg)	WEIGHT PER 100(Kg)	DIMENSION(mm)			
			A	B	C	D
5	80	12	10.40	10.30	17.60	4.60
6	100	22	14.00	11.90	25.00	5.50
8	200	49	17.00	14.80	32.00	7.30
10	320	90	19.00	19.00	37.00	9.00
13	520	190	25.00	25.00	49.00	11.00
16	800	440	32.00	32.00	62.00	15.00
19	1100	800	37.40	37.00	74.00	18.80
22	1500	1150	44.00	43.00	87.00	21.00
25	2100	1800	50.00	50.00	98.00	25.00
28	3000	2370	56.00	56.00	110.00	28.00
32	3500	3600	62.00	60.00	123.00	32.00
38	5000	6000	75.00	76.00	145.00	38.00

欧式弓形卸扣 ■ EUROPEAN LARGE BOW SHACKLE



- Meets the performance of European Standard
- Material: Carbon 1015
- Finish: Electronic Galvanized or Hot Dip Galvanized
- Packing with Gunny Bag or Carton Box



SIZE (mm)	SWL (Kg)	WEIGHT PER 100(Kg)	DIMENSION(mm)				
			A	B	C	D	R
5	80	14	10.50	10.50	20.00	4.50	7.80
6	100	24	13.00	12.50	24.00	5.50	9.00
8	200	52	16.20	15.20	32.00	7.30	12.00
10	320	100	19.00	19.00	37.00	9.00	15.00
13	520	200	24.00	24.00	50.00	11.00	18.50
16	800	470	31.00	32.00	64.00	15.00	24.00
19	1100	650	37.00	37.00	75.00	18.80	29.00
22	1500	1300	42.00	44.00	88.00	21.00	34.00
25	2100	1900	50.00	51.00	98.00	25.00	36.00
28	3000	2500	56.00	56.00	110.00	27.00	40.00
32	3500	3900	64.00	64.00	127.00	32.00	48.00
38	5000	6800	75.00	76.00	150.00	38.00	60.00



紧索具 LOAD BINDER



美式杠杆紧索具

LEVER LOAD BINDER

- Forged-Quenched and Tempered with 100% Proof Tested
- Finish: Powder Coated
- Material: Certificates and Testing Certificates available when requested at the time of order
- Packing available with Carton Box



Size (inch)	W.L.L. (lbs)	WPROF LOAD (lbs)	ULTIMATE LOAD (lbs)	N.W. (lbs)	HANDLE LENGTH (inch)	TAKE UP (inch)	DIMENSIONS(inch)						
							A	B	C	D	E	F	G
1/4-5/16	2600	5200	9200	3.52	11.42	3.75	18.50	17.30	14.17	11.42	8.27	8.07	0.35
5/16-3/8	5400	10800	19000	8.37	15.43	4.50	25.20	23.20	19.49	15.55	11.22	11.22	0.51
3/8-1/2	9200	18400	33000	12.20	17.24	4.50	28.50	28.50	22.05	17.64	12.99	12.20	0.59
1/2-5/8	13000	26000	46000	19.70	21.00	4.75	33.86	33.86	25.78	20.84	14.37	13.37	0.74

美式棘轮紧索具

RATCHET TYPE LOAD BINDER



- Forged-Quenched and Tempered with 100% Proof Tested
- Finish: Powder Coated
- Material: Certificates and Testing Certificates available when requested at the time of order
- Packing available with Carton Box

Size (inch)	W.L.L. (lbs)	WPROF LOAD (lbs)	ULTIMATE LOAD (lbs)	N.W. (lbs)	HANDLE LENGTH (inch)	DIMENSIONS(inch)							
						A	B	C	E	E1	F	F1	G
1/4-5/16	2600	5200	9200	3.52	7.16	7.16	0.89	1.17	16.22	21.26	17.79	22.83	0.35
5/16-3/8	5400	10800	19000	10.50	13.92	13.92	1.30	2.60	22.64	30.64	25.24	33.24	0.51
3/8-1/2	9200	18400	33000	12.90	13.92	13.92	1.30	2.60	24.13	32.13	12.20	35.04	0.59
1/2-5/8	13000	26000	46000	14.38	21.00	13.92	1.30	2.60	26.45	24.45	30.07	38.07	0.74

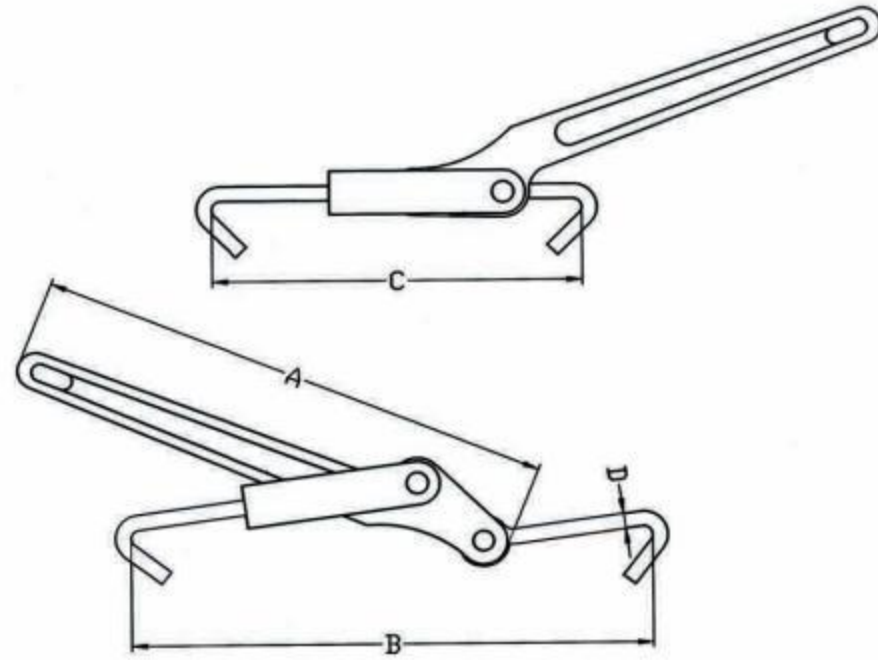
LOAD BINDER



美式轻型紧索具

■ US TYPE LIGHT LEVER LOAD BINDER

- Meets or exceeds DOT and CVSA Cargo Securement Tie-Down Guideline
- Forged-Quenched and Tempered with 100% Proof Tested
- Finish: Powder Coated
- Material: Certificates and Testing Certificates available when requested at the time of order
- Packing available with Carton Box

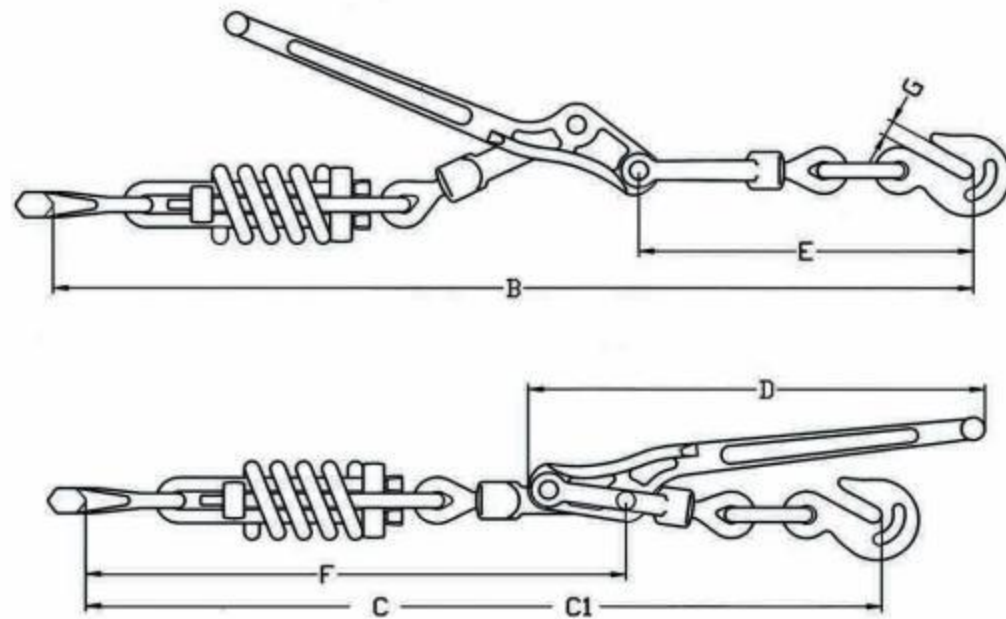


SIZE	WLL (kg)	MBS (kg)	WEIGHT (kg)	DIMENSION(mm)			
				A	B	C	D
250	250	500	1.43	9.5	9.37	6.5	0.275
375	375	750	1.52	9.5	9.37	6.5	0.394

美标弹簧式紧索具

■ US TYPE SPRING LEVER LOAD BINDER

- Meets or exceeds DOT and CVSA Cargo Securement Tie-Down Guideline
- Forged-Quenched and Tempered with 100% Proof Tested
- Finish: Powder Coated
- Material Certificates and Testing Certificates available when requested at the time of order
- Packing available with Carton Box



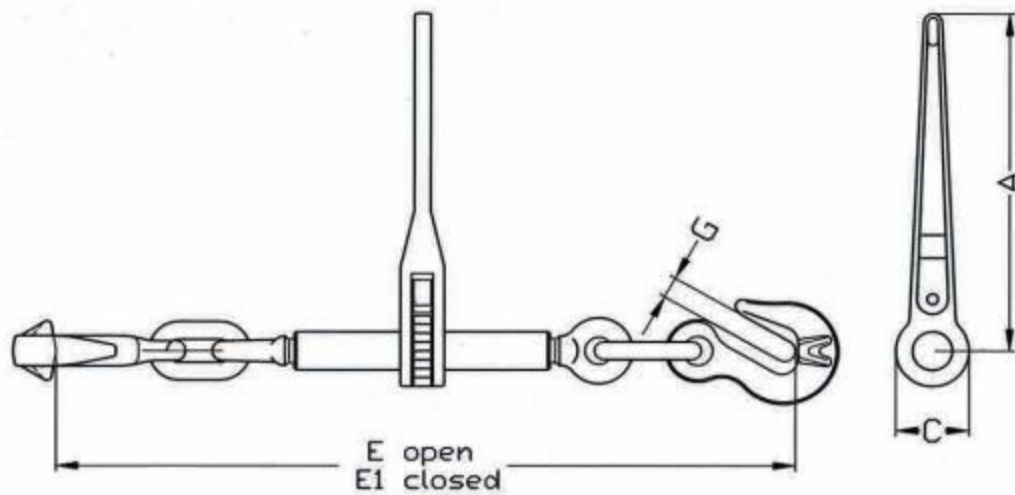
SIZE	WLL (lbs)	MBL (lbs)	WEIGHT (lbs)	DIMENSION(in)						
				B	C	C1	D	E	F	G
5/16-3/8	5400	19000	14.96	31.77	27.67	28.77	15.75	11.30	19.09	0.50
3/8-1/2	9200	33000	19.36	35.23	30.11	31.21	17.36	12.80	20.63	0.65

澳式棘轮紧索具

■ AUSTRALIA TYPE RATCHET LOAD BINDER WITH WING HOOK

- Meets performance requirements of AS/NZ4344:2001 standard
- Forged-Quenched and Tempered with 100% Proof Tested
- Finish: Powder Coated
- Material: Certificates and Testing Certificates available when requested at the time of order
- Packing available with Carton Box

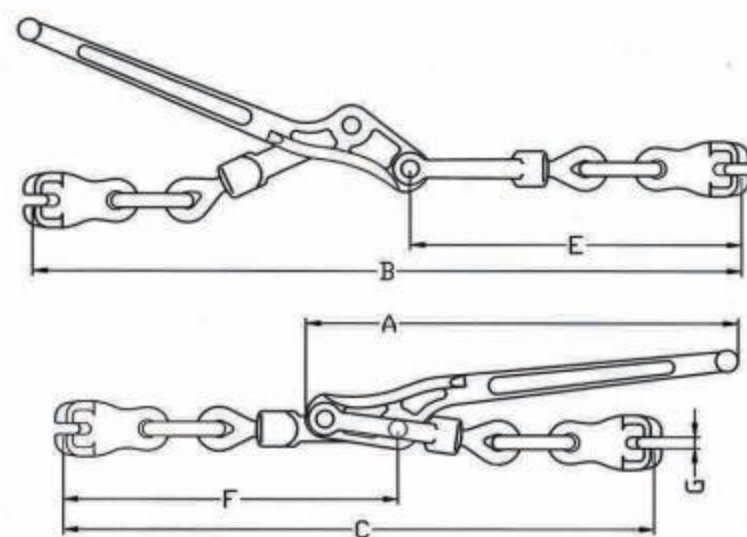
SIZE	WLL (kg)	MBL (kg)	WEIGHT (kg)	DIMENSION(mm)				
				A	C	E1	E	G
6mm	2300	4600	1.69	210	42	415	528	10
7-8mm	3800	8600	4.9	355	65	590	754	11
10mm	6000	12000	5.4	355	65	610	775	12
13mm	9000	18000	7.5	355	65	700	870	15



澳式杠杆紧索具

■ AUSTRALIA TYPE LEVER LOAD BINDER WITH CLAW HOOK

- Meets performance requirements of AS/NZ4344:2001 standard
- Forged-Quenched and Tempered with 100% Proof Tested
- Finish: Powder Coated
- Material Certificates and Testing Certificates available when requested at the time of order
- Packing available with Carton Box



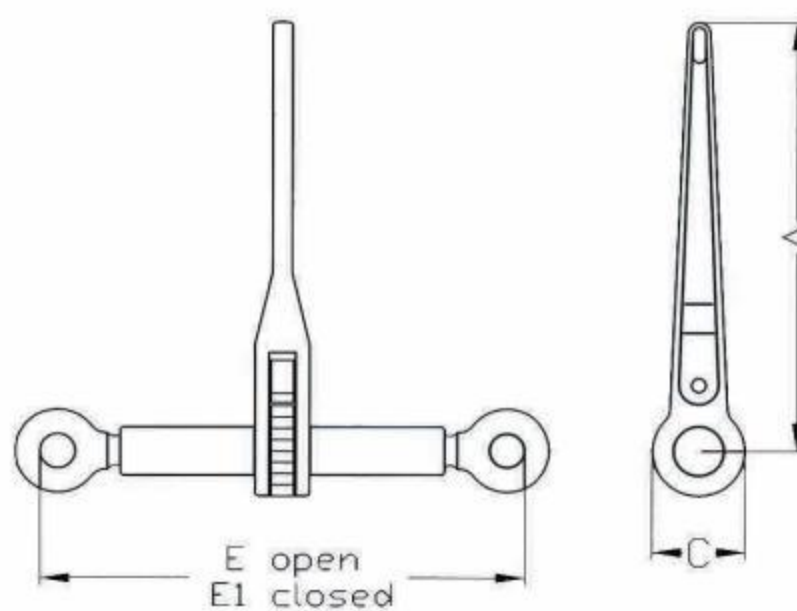
SIZE	WLL (kg)	MBS (kg)	WEIGHT (kg)	DIMENSION(mm)					
				A	B	C	E	F	G
7-8mm	3800	8600	3.8	400	633	529	300	298	9.5
10mm	6000	12000	5.8	441	735	605	345	344	11.5

LOAD BINDER

欧式无钩无环棘轮紧索具

■ EUROPEAN STANDARD TYPE RATCHET LOAD BINDER WITHOUT LINK AND HOOK

- Meets performance requirements of European standard
- Forged-Quenched and Tempered with 100% Proof Tested
- Finish: Powder Coated
- Packing available with Carton Box



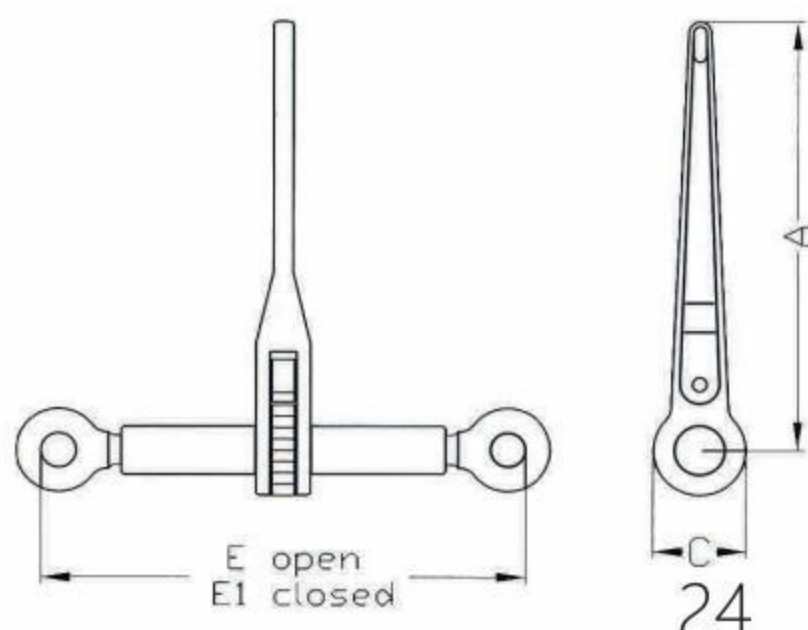
SIZE	WLL (kg)	MBS (kg)	WEIGHT (kg)	DIMENSION(mm)			
				A	C	E	E1
8-10mm	2400	8600	3.40	13.98	2.56	20.00	13.54
10-13mm	4200	15000	3.50	13.98	2.56	20.16	13.66
13-16mm	6000	20800	4.20	13.98	2.56	21.61	14.92

EN12195-3无钩无环棘轮紧索具

■ EN 12195-3 TYPE RATCHET LOAD BINDER WITHOUT LINK AND HOOK

- Meets performance requirements of EN12195-3
- Forged-Quenched and Tempered with 100% Proof Tested
- Finish: Powder Coated
- Material Certificates and Testing Certificates available when requested at the time of order
- Packing available with Carton Box

SIZE	LC (KN)	BF (KN)	WEIGHT (kg)	DIMENSION(mm)			
				A	C	E	E1
8mm	40	80	3.40	13.98	2.56	20.00	13.54
10mm	63	126	3.50	13.98	2.56	20.16	13.66
13mm	100	212	4.20	13.98	2.56	21.61	14.92



捆扎杆

LEVER TENSIONER

- Forged-Quenched and Tempered with 100% Proof Tested
- Finish: Powder Coated
- Material: Certificates and Testing Certificates available when requested at the time of order
- Packing available with Carton Box



SIZE (mm)	M.B.S (tons)	Weight (lbs)
9	10	7.7
11	15	8.58
13	20	13.20

捆扎链

LASHING CHAIN

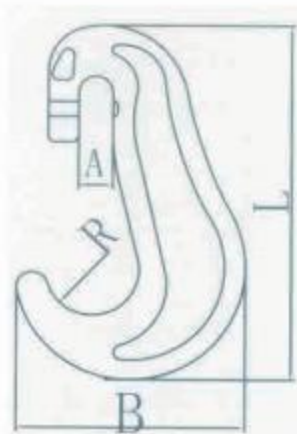


SIZE (mm)	Inner length	Weight kg/m	BL KN
9	57	1.42	100
11	64	2.14	150
13	80	3.00	200



板钩

LASHING TYPE C HOOK



WEIGHT (kg)	WLL (t)	B.L (t)	L	A	B	R
0.5	2.5	10	143	13.5	90.5	18.5
0.85	3.75	15	177	15.5	109.5	22
1.38	5.4	21.6	205	17.7	129	25.5



花 兰

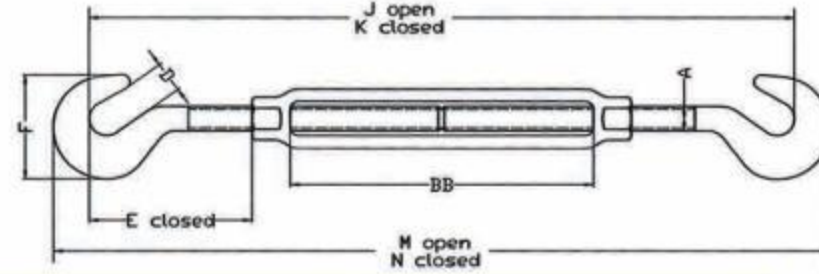
TURNBUCKLES



美式模锻花兰钩钩形

US TYPE FORGED TURNBUCKLE WITH HOOK&HOOK

- Meets performance requirements of US Fed.Spec.FF-T-791b,Type 1,Form 1,Class 5 and ASTM F-1145
- Material:Carbon 1045 Steel
- Ultimate Load at 5 times the Working Load Limit
- Finish:Hot Dip Galvanized according to ASTM A153
- Packing with Gunny bag or Carton Box

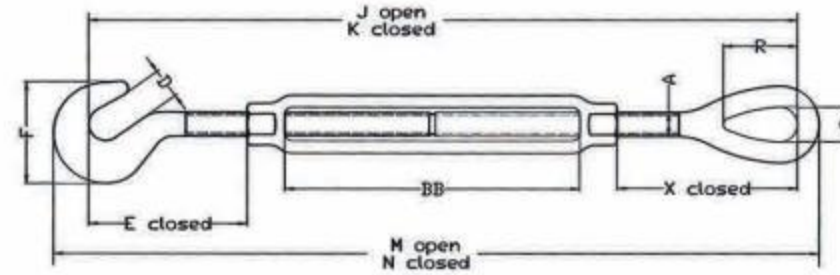


SIZE	WLL (lbs)	WEIGHT (kg)	DIMENSION(in)								
			A	D	E-closed	F	J-open	K-closed	M-open	N-closed	BB
1/4x4	400	0.3	0.25	0.45	1.59	1.27	11.12	7.12	11.94	7.94	4
5/16x4-1/2	700	0.47	0.31	0.5	1.94	1.5	12.81	8.31	13.81	9.31	4.5
3/8x6	1000	0.78	0.38	0.56	2.3	1.77	16.5	10.5	17.72	11.72	6
1/2x6	1500	1.6	0.5	0.66	2.94	2.28	18.82	11.82	20.38	13.38	6
1/2x12	1500	2.28	0.5	0.66	2.94	2.28	30.82	17.82	32.38	19.38	12
5/8x6	2250	2.75	0.63	0.9	3.69	2.81	20.5	13.25	22.5	15.25	6
5/8x12	2250	3.5	0.63	0.9	3.69	2.81	32.5	19.25	34.5	21.25	12
3/4x6	3000	3.89	0.75	0.98	4.52	3.33	22.38	14.88	24.78	17.28	6
3/4x12	3000	5.43	0.75	0.98	4.52	3.33	34.38	20.88	36.78	23.28	12
3/4x18	3000	8.12	0.75	0.98	4.52	3.33	46.38	26.88	48.78	29.28	18
7/8x12	4000	8.1	0.88	1.13	5.19	3.78	36	22.25	38.75	25	12
1x12	5000	11.93	1	1.25	5.84	4.25	37.63	23.63	40.69	26.69	12
1x18	5000	14	1	1.25	5.84	4.25	49.63	29.63	52.69	32.69	18
1x24	5000	17.25	1	1.25	5.84	4.25	61.63	35.63	64.69	38.69	24
1-1/4x12	6500	20.58	1.25	1.5	7.22	5.13	40.44	25.94	44.06	29.56	12
1-1/4x18	6500	23	1.25	1.5	7.22	5.13	52.44	31.94	56.06	35.56	18
1-1/4x24	6500	27	1.25	1.5	7.22	5.13	64.44	37.94	68.06	41.56	24
1-1/2x12	7500	27.5	1.5	1.88	8.34	5.75	43.94	28.94	47.44	32.44	12
1-1/2x18	7500	31	1.5	1.88	8.34	5.75	55.96	34.94	59.44	38.44	18
1-1/2x24	7500	37.5	1.5	1.88	8.34	5.75	67.94	40.94	71.44	44.44	24

美式模锻花兰钩环形

US TYPE FORGED TURNBUCKLE WITH HOOK&EYE

- Meets performance requirements of US Fed.Spec.FF-T-791b,Type 1,Form 1,Class 5 and ASTM F-1145
- Material:Carbon 1045 Steel
- Ultimate Load at 5 times the Working Load Limit
- Finish:Hot Dip Galvanized according to ASTM A153
- Packing with Gunny bag or Carton Box

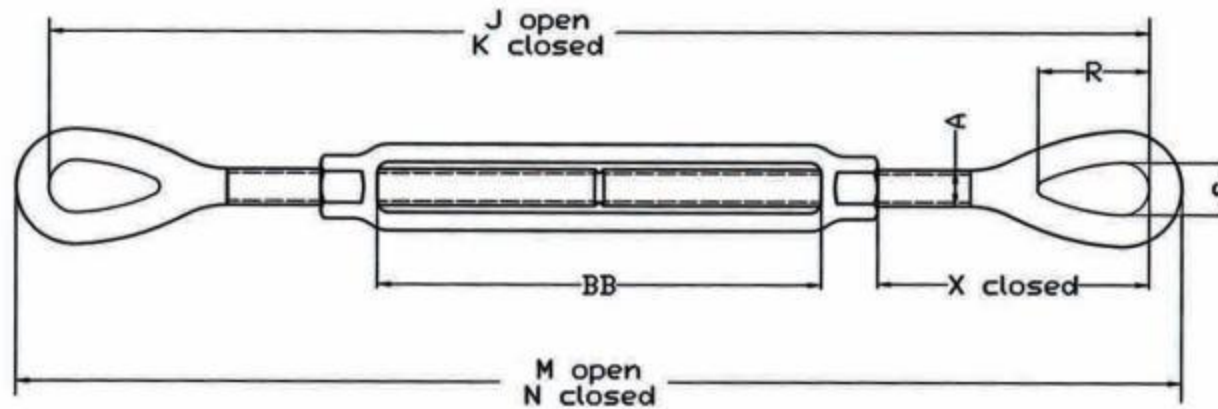


SIZE	WLL (lbs)	WEIGHT (kg)	DIMENSION(in)											
			A	D	E-closed	F	J-open	K-closed	M-open	N-closed	R	S	X-closed	BB
1/4x4	400	0.29	0.25	0.45	1.59	1.27	11.46	7.46	12.09	8.09	0.78	0.34	1.75	4
5/16x4-1/2	700	0.49	0.31	0.5	1.94	1.5	13.19	8.69	13.47	9.47	0.94	0.44	2.09	4.5
3/8x6	1000	0.78	0.38	0.56	2.3	1.77	16.98	10.98	17.94	11.94	1.12	0.53	2.52	6
1/2x6	1500	1.61	0.5	0.66	2.94	2.28	19.45	12.45	20.67	13.67	1.44	0.72	3.23	6
1/2x12	1500	2.26	0.5	0.66	2.94	2.28	31.45	18.45	32.67	19.67	1.44	0.72	3.23	12
5/8x6	2250	2.7	0.63	0.9	3.69	2.81	21.96	13.96	22.72	15.47	1.75	0.88	3.9	6
5/8x12	2250	3.78	0.63	0.9	3.69	2.81	33.21	19.96	34.72	21.47	1.75	0.88	3.9	12
3/4x6	3000	3.89	0.75	0.98	4.52	3.33	23.13	15.63	24.95	17.45	2.09	1	4.69	6
3/4x12	3000	5.83	0.75	0.98	4.52	3.33	35.13	21.63	36.95	23.45	2.09	1	4.69	12
3/4x18	3000	6.33	0.75	0.98	4.52	3.33	47.13	27.63	48.95	29.45	2.09	1	4.69	18
7/8x12	4000	8.1	0.88	1.13	5.19	3.78	36.53	22.78	38.66	24.91	2.38	1.25	5.1	12
1x12	5000	11.93	1	1.25	5.84	4.25	38.8	24.8	41.2	27.2	3	1.44	6.36	12
1x18	5000	14	1	1.25	5.84	4.25	50.8	30.8	53.2	33.2	3	1.44	6.36	18
1x24	5000	17.25	1	1.25	5.84	4.25	62.8	36.8	65.2	39.2	3	1.443	6.36	24
1-1/4x12	6500	19	1.25	1.5	7.22	5.13	41.63	27.13	44.56	30.06	3.56	1.81	7.72	12
1-1/4x18	6500	23	1.25	1.5	7.22	5.13	53.63	33.13	56.56	36.06	3.56	1.81	7.72	18
1-1/4x24	6500	24	1.25	1.5	7.22	5.13	65.63	39.13	68.56	42.06	3.56	1.81	7.72	24
1-1/2x12	7500	27.5	1.5	1.88	8.34	5.75	44.72	29.72	47.72	32.72	4.06	2.12	8.62	12
1-1/2x18	7500	31	1.5	1.88	8.34	5.75	56.72	35.72	59.72	38.72	4.06	2.12	8.62	18
1-1/2x24	7500	37.5	1.5	1.88	8.34	5.75	68.72	41.72	71.72	44.72	4.06	2.12	8.62	24

美式模锻花兰环环形

■ US TYPE FORGED TURNBUCKLE WITH EYE&EYE

- Meets performance requirements of US Fed.Spec.FF-T-791b,Type 1,Form 1,Class 5 and ASTM F-1145
- Material:Carbon 1045 Steel
- Ultimate Load at 5 times the Working Load Limit
- Finish:Hot Dip Galvanized according to ASTM A153
- Packing with Gunny bag or Carton Box

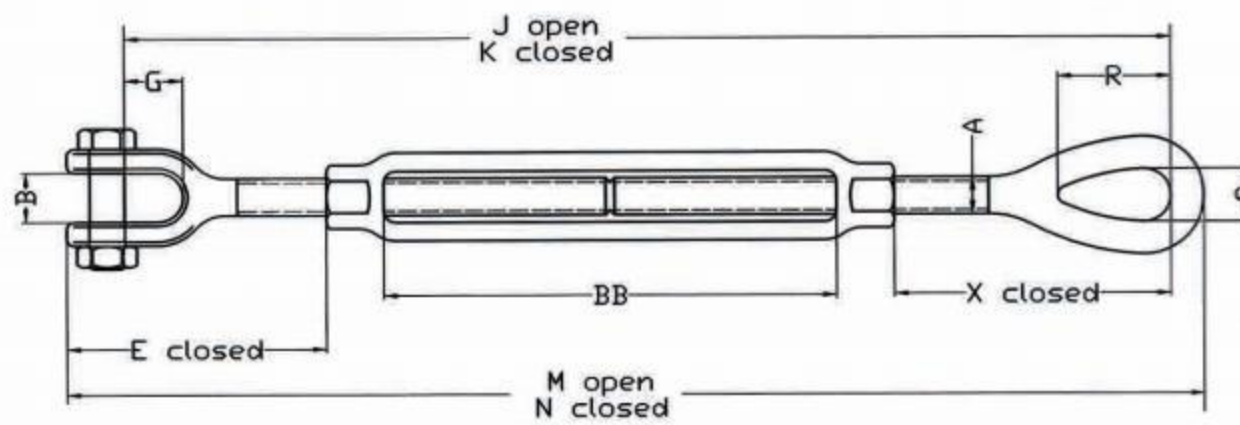


SIZE	WLL (lbs)	WEIGHT (lbs)	DIMENSION(in)								
			A	J-open	K-closed	M-open	N-closed	R	S	X-closed	BB
1/4x4	500	0.26	0.25	11.8	7.8	12.25	8.25	0.78	0.34	1.75	4
5/16x4-1/2	800	0.45	0.31	13.56	9.06	14.12	9.62	0.94	0.44	2.09	4.5
3/8x6	1200	0.76	0.38	17.47	11.47	18.16	12.16	1.12	0.53	2.52	6
1/2x6	2200	1.54	0.5	20.08	13.08	20.96	13.96	1.44	0.72	3.23	6
1/2x12	2200	2.14	0.5	32.08	19.08	32.96	19.96	1.44	0.72	3.23	12
5/8x6	3500	2.40	0.63	21.93	14.68	22.93	15.68	1.75	0.88	3.9	6
5/8x12	3500	3.42	0.63	33.93	20.68	34.93	21.68	1.75	0.88	3.9	12
3/4x6	5200	3.79	0.75	23.88	16.38	25.12	17.62	2.09	1	4.69	6
3/4x12	5200	5.48	0.75	35.88	22.38	37.12	23.62	2.09	1	4.69	12
3/4x18	5200	7.19	0.75	47.88	28.38	49.12	29.62	2.09	1	4.69	18
7/8x12	7200	7.22	0.88	37.07	23.32	38.57	24.82	2.38	1.25	5.1	12
7/8x18	7200	9.95	0.88	49.07	29.32	50.57	30.82	2.38	1.25	5.1	18
1x6	10000	9.04	1	27.97	19.97	29.72	21.72	3	1.44	6.36	6
1x12	10000	11.50	1	39.97	25.97	41.97	27.72	3	1.44	6.36	12
1x18	10000	14.00	1	51.97	31.97	53.72	33.72	3	1.44	6.36	18
1x24	10000	17.25	1	63.97	37.97	65.72	39.72	3	1.44	6.36	24
1-1/4x12	15200	19.00	1.25	42.81	28.31	45.06	30.56	3.56	1.81	7.72	12
1-1/4x18	15200	23.00	1.25	54.81	34.31	57.06	36.56	3.56	1.81	7.72	18
1-1/4x24	15200	27.00	1.25	66.81	40.31	69.06	42.56	3.56	1.81	7.72	24
1-1/2x12	21400	27.50	1.5	45.5	30.5	48	33	4.06	2.12	8.62	12
1-1/2x18	21400	31.00	1.5	57.5	36.5	60	39	4.06	2.12	8.62	18
1-1/2x24	21400	37.50	1.5	69.5	42.5	72	45	4.06	2.12	8.62	24
1-3/4x18	28000	52.50	1.75	57.38	39.38	60.38	42.38	4.62	2.38	10	18
1-3/4x24	28000	58.00	1.75	69.38	45.38	72.38	48.38	4.62	2.38	10	24
2x24	37000	85.25	2	75.69	51.69	79.19	55.19	5.75	2.69	13.09	24
2-1/2x24	60000	144.25	2.5	78.62	54.62	82.62	58.62	6.5	3.12	13.78	24
2-3/4x24	75000	194.00	2.75	81	57	85.5	61.5	7	3.25	15.22	24

美式模锻花兰叉环形

■ US TYPE FORGED TURNBUCKLE WITH JAW&EYE

- Meets performance requirements of US Fed.Spec.FF-T-791b,Type 1,Form 1,Class 5 and ASTM F-1145
- Material:Carbon 1045 Steel
- Ultimate Load at 5 times the Working Load Limit
- Finish:Hot Dip Galvanized according to ASTM A153
- Packing with Gunny bag or Carton Box



SIZE	WLL (lbs)	WEIGHT (lbs)	DIMENSION(in)											
			A	B	E-closed	G	J-open	K-closed	M-open	N-closed	R	S	X-closed	BB
1/4x4	500	0.3	0.25	0.45	1.58	0.62	11.35	7.35	12.07	8.07	0.78	0.34	1.75	4
5/16x4-1/2	800	0.5	0.31	0.5	1.98	0.87	13.71	8.71	14.01	9.51	0.94	0.44	2.09	4.5
3/8x6	1200	0.8	0.38	0.54	2.12	0.87	16.81	10.81	17.77	11.77	1.12	0.53	2.52	6
1/2x6	2200	1.51	0.5	0.65	2.75	1.06	19.29	12.29	20.48	13.48	1.44	0.72	3.23	6
1/2x9	2200	1.71	0.5	0.65	2.75	1.06	25.29	15.29	26.48	16.48	1.44	0.72	3.23	9
1/2x12	2200	2.08	0.5	0.65	2.75	1.06	31.29	18.29	32.48	19.48	1.44	0.72	3.23	12
5/8x6	3500	2.35	0.63	0.79	3.5	1.31	20.99	13.74	22.53	15.28	1.75	0.88	3.9	6
5/8x9	3500	3.17	0.63	0.79	3.5	1.31	26.99	16.74	28.53	18.28	1.75	0.88	3.9	9
5/8x12	3500	3.61	0.63	0.79	3.5	1.31	32.99	19.74	34.53	21.28	1.75	0.88	3.9	12
3/4x6	5200	4	0.75	0.94	4.18	1.5	22.69	15.19	24.61	17.11	2.09	1	4.69	6
3/4x9	5200	4.75	0.75	0.94	4.18	1.5	28.69	18.19	30.61	20.11	2.09	1	4.69	9
3/4x12	5200	5.93	0.75	0.94	4.18	1.5	34.69	21.19	36.61	23.11	2.09	1	4.69	12
3/4x18	5200	7	0.75	0.94	4.18	1.5	46.69	27.19	48.61	29.11	2.09	1	4.69	18
7/8x12	7200	8.36	0.88	1.13	4.85	1.75	36.09	22.34	38.32	24.57	2.38	1.25	5.1	12
7/8x18	7200	9.75	0.88	1.13	4.85	1.75	48.09	28.34	50.32	30.57	2.38	1.25	5.1	18
1x6	10000	8.92	1	1.34	5.53	2.06	26.34	18.34	28.89	20.89	3	1.44	6.36	6
1x12	10000	11.2	1	1.34	5.53	2.06	38.34	24.34	40.89	26.89	3	1.44	6.36	12
1x18	10000	13.3	1	1.34	5.53	2.06	50.34	30.34	52.89	32.89	3	1.44	6.36	18
1x24	10000	17	1	1.34	5.53	2.06	62.34	36.34	64.89	38.89	3	1.44	6.36	24
1-1/4x12	15200	19.42	1.25	1.75	7.21	2.81	41.32	26.82	44.55	30.05	3.56	1.81	7.72	12
1-1/4x18	15200	24.18	1.25	1.75	7.21	2.81	53.32	32.82	56.05	36.05	3.56	1.81	7.72	18
1-1/4x24	15200	28.5	1.25	1.75	7.21	2.81	65.32	38.82	68.55	42.05	3.56	1.81	7.72	24
1-1/2x12	21400	28.99	1.5	2.06	7.88	2.81	43.5	28.5	47.25	32.25	4.06	2.12	8.62	12
1-1/2x18	21400	35	1.5	2.06	7.88	2.81	55.5	34.5	59.25	38.25	4.06	2.12	8.62	18
1-1/2x24	21400	39.18	1.5	2.06	7.88	2.81	67.5	40.5	71.25	44.25	4.06	2.12	8.62	24
1-3/4x18	28000	53.75	1.75	2.6	9.4	3.38	55.38	37.38	59.78	41.78	4.62	2.38	10	18
1-3/4x24	28000	60.68	1.75	2.6	9.4	3.38	67.38	43.38	71.78	47.78	4.62	2.38	10	24
2x24	37000	89	2	2.62	11.86	3.69	72.62	48.62	77.95	53.95	5.75	2.69	13.09	24
2-1/2x24	60000	150	2.5	3.01	13.56	4.44	75.8	51.8	82.4	58.4	6.5	3.12	13.78	24
2-3/4x24	75000	183	2.75	3.63	15.22	4.19	77.88	53.88	85.5	61.5	7	3.25	15.22	24

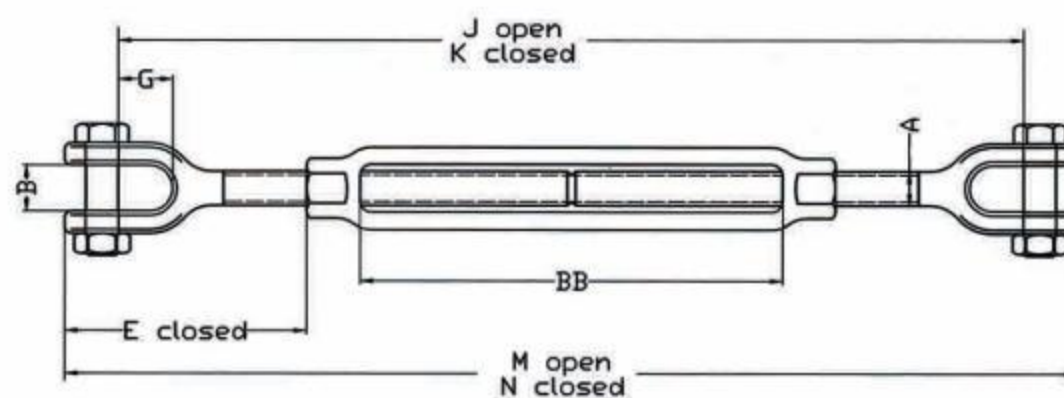
TURNBUCKLE



美式模锻花兰叉叉形

■ US TYPE FORGED TURNBUCKLE WITH JAW&JAW

- Meets performance requirements of US Fed.Spec.FF-T-791b,Type 1,Form 1,Class 5 and ASTM F-1145
- Material:Carbon 1045 Steel
- Ultimate Load at 5 times the Working Load Limit
- Finish:Hot Dip Galvanized according to ASTM A153
- Packing with Gunny bag or Carton Box

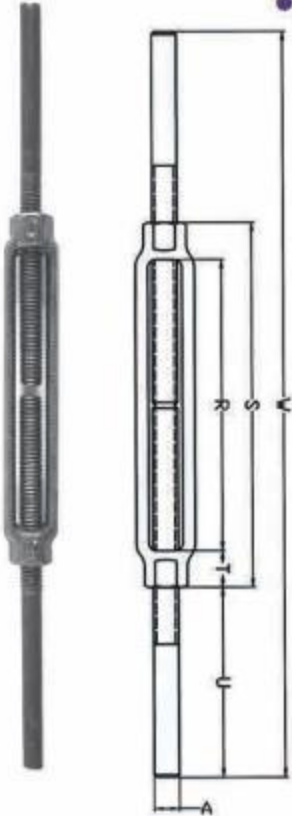


SIZE	WLL (lbs)	WEIGHT (lbs)	DIMENSION(in)								
			A	B	E-closed	G	J-open	K-closed	M-open	N-closed	BB
1/4x4	500	0.36	0.25	0.45	1.58	0.62	10.9	6.9	11.9	7.9	4
5/16x4-1/2	800	0.52	0.31	0.5	1.98	0.87	12.36	8.36	13.9	9.4	4.5
3/8x6	1200	0.81	0.38	0.54	2.12	0.87	16.14	10.14	17.38	11.38	6
1/2x6	2200	1.56	0.5	0.65	2.75	1.06	18.5	11.5	20	13	6
1/2x9	2200	1.74	0.5	0.65	2.75	1.06	24.5	14.5	26	16	9
1/2x12	2200	2.4	0.5	0.65	2.75	1.06	30.5	17.5	32	19	12
5/8x6	3500	2.72	0.63	0.79	3.5	1.31	20.05	12.8	22.13	14.88	6
5/8x9	3500	3.43	0.63	0.79	3.5	1.31	26.05	15.8	28.13	17.88	9
5/8x12	3500	3.91	0.63	0.79	3.5	1.31	32.05	18.8	34.13	20.88	12
3/4x6	5200	4.11	0.75	0.94	4.18	1.5	21.5	14	24.1	16.6	6
3/4x9	5200	5.46	0.75	0.94	4.18	1.5	27.5	17	30.1	19.6	9
3/4x12	5200	6.56	0.75	0.94	4.18	1.5	33.5	20	36.1	22.6	12
3/4x18	5200	8.03	0.75	0.94	4.18	1.5	45.5	26	48.1	28.6	18
7/8x12	7200	8.17	0.88	1.13	4.85	1.75	35.11	21.36	38.07	24.32	12
7/8x18	7200	10.78	0.88	1.13	4.85	1.75	47.11	27.36	50.07	30.32	18
1x6	10000	10.18	1	1.34	5.53	2.06	24.72	16.72	28.06	20.06	6
1x12	10000	12.2	1	1.34	5.53	2.06	36.72	22.72	40.06	26.06	12
1x18	10000	15.14	1	1.34	5.53	2.06	48.72	28.72	52.06	32.06	18
1x24	10000	18.08	1	1.34	5.53	2.06	60.72	34.72	64.06	38.06	24
1-1/4x12	15200	20.59	1.25	1.75	7.21	2.81	39.84	25.34	44.04	29.54	12
1-1/4x18	15200	24.68	1.25	1.75	7.21	2.81	51.84	31.34	56.04	35.54	18
1-1/4x24	15200	28.2	1.25	1.75	7.21	2.81	63.84	37.34	68.04	41.54	24
1-1/2x12	21400	30.69	1.5	2.06	7.88	2.81	41.5	26.5	46.5	31.5	12
1-1/2x18	21400	36.75	1.5	2.06	7.88	2.81	53.5	32.5	58.5	37.5	18
1-1/2x24	21400	41.6	1.5	2.06	7.88	2.81	65.5	38.5	70.5	43.5	24
1-3/4x18	28000	54	1.75	2.6	9.4	3.38	53.38	35.38	59.18	41.18	18
1-3/4x24	28000	63.36	1.75	2.6	9.4	3.38	65.38	41.38	71.18	47.18	24
2x24	37000	94.25	2	2.62	11.86	3.69	69.54	45.54	76.72	52.72	24
2-1/2x24	60000	165	2.5	3.01	13.56	4.44	72.98	48.98	82.18	58.18	24
2-3/4x24	75000	198	2.75	3.63	15.22	4.19	74.75	50.75	85.5	61.5	24

美式直杆花兰

■ US TYPE FORGED TURNBUCKLE WITH STUB END

- Meets performance requirements of US Fed.Spec.FF-T-791b,Type 1,Form 1,Class 5 and ASTM F-1145
- Material:Carbon 1045 Steel
- Ultimate Load at 5 times the Working Load Limit
- Finish:Self Color
- Packing with Gunny bag or Carton Box

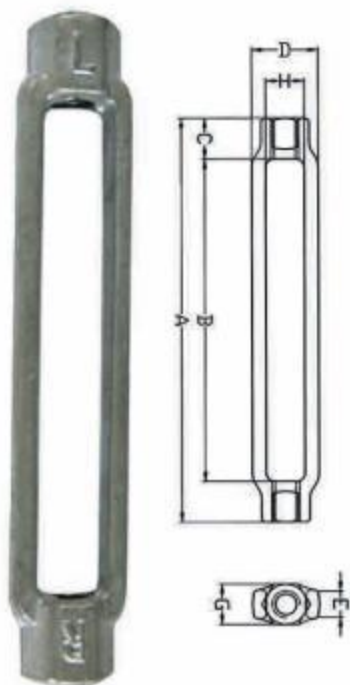


Shank Dia.& Take Up(in)	Working Load Limit (lbs)	Weight Each (lbs)	DIMENSION(in)					
			A	R	S	T	U	W
3/8x6	1200	0.75	0.38	6.00	7.13	0.56	4.44	16.00
1/2x6	2200	1.25	0.50	6.00	7.50	0.75	4.25	16.00
5/8x6	3500	2.11	0.63	6.00	7.88	0.94	4.06	16.00
3/4x6	5200	3.27	0.75	6.00	8.25	1.13	4.38	17.00
7/8x6	7200	4.78	0.88	6.00	8.63	1.31	4.69	18.00
1x6	10000	6.36	1.00	6.00	9.00	1.50	5.00	19.00
1x12	10000	8.80	1.00	12.00	15.00	1.50	5.00	25.00
1-1/8x6	12400	8.88	1.13	6.00	9.13	1.56	4.94	19.00
1-1/4x6	15200	10.18	1.25	6.00	9.13	1.56	5.44	20.00
1-1/4x12	15200	13.60	1.25	12.00	15.12	1.56	5.44	26.00
1-1/2x12	21400	20.44	1.50	12.00	15.75	1.88	5.38	26.50

美式花兰体

■ US TYPE FORGED TURNBUCKLE BODY

- Meets performance requirements of US Fed.Spec.FF-T-791b,Type 1,Form 1,Class 5 and ASTM F-1145
- Material:Carbon 1045 Steel
- Ultimate Load at 5 times the Working Load Limit
- Finish:Self Color
- Packing with Gunny bag or Carton Box



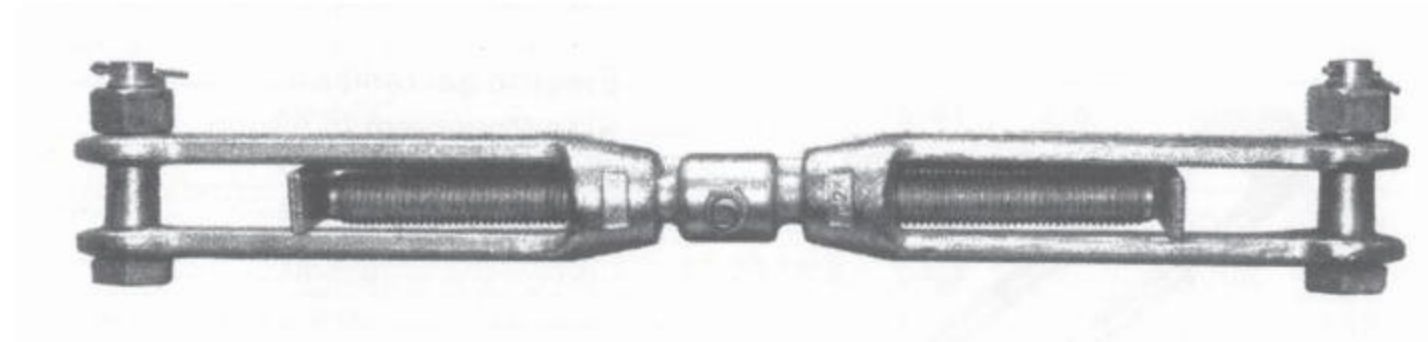
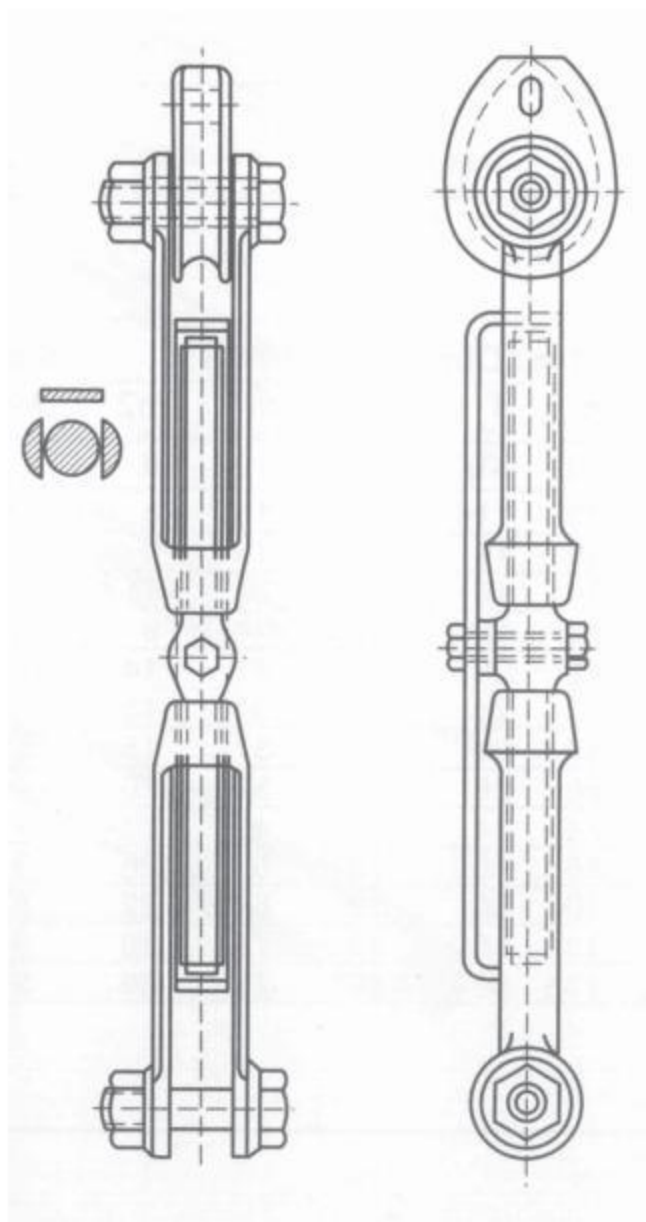
Shank Dia.& Take Up(in)	Working Load Limit (lbs)	Weight Each (lbs)	DIMENSION(in)						
			A	B	C	D	E	G	H
1/4x4	500	0.15	4.75	4.00	0.38	0.72	0.34	0.50	0.38
5/16x4-1/2	800	0.19	5.44	4.50	0.47	0.81	0.38	0.56	0.44
3/8x6	1200	0.29	7.12	6.00	0.56	0.88	0.38	0.62	0.50
1/2x6	2200	0.60	7.50	6.00	0.75	1.12	0.50	0.81	0.62
1/2x9	2200	0.68	10.50	9.00	0.75	1.12	0.50	0.81	0.62
1/2x12	2200	1.00	13.50	12.00	0.75	1.12	0.50	0.81	0.62
5/8x6	3500	0.90	7.88	6.00	0.94	1.38	0.62	1.00	0.75
5/8x9	3500	1.18	10.88	9.00	0.94	1.38	0.62	1.00	0.75
5/8x12	3500	1.43	13.88	12.00	0.94	1.38	0.62	1.00	0.75
3/4x6	5200	1.30	8.25	6.00	1.12	1.69	0.75	1.12	0.94
3/4x9	5200	1.75	11.25	9.00	1.12	1.69	0.75	1.12	0.94
3/4x12	5200	2.08	14.25	12.00	1.12	1.69	0.75	1.12	0.94
3/4x18	5200	2.50	20.25	18.00	1.12	1.69	0.75	1.12	0.94
7/8x12	7200	2.70	14.62	12.00	1.31	1.94	0.88	1.31	1.06
7/8x18	7200	3.80	20.62	18.00	1.31	1.94	0.88	1.31	1.06
1x6	10000	2.48	9.00	6.00	1.50	2.25	1.00	1.50	1.25
1x12	10000	3.93	15.00	12.00	1.50	2.25	1.00	1.50	1.25
1x18	10000	5.28	21.00	18.00	1.50	2.25	1.00	1.50	1.25
1x24	10000	7.38	27.00	24.00	1.50	2.25	1.00	1.50	1.25
1-1/4x12	15200	5.25	15.12	12.00	1.56	2.62	1.25	1.88	1.50
1-1/4x18	15200	7.75	21.12	18.00	1.56	2.62	1.25	1.88	1.50
1-1/4x24	15200	10.17	27.12	24.00	1.56	2.62	1.25	1.88	1.50
1-1/2x12	21400	8.75	15.75	12.00	1.88	3.00	1.50	2.25	1.75
1-1/2x18	21400	11.00	21.75	18.00	1.88	3.00	1.50	2.25	1.75
1-1/2x24	21400	13.69	27.75	24.00	1.88	3.00	1.50	2.25	1.75
1-3/4x18	28000	16.38	22.38	18.00	2.19	3.62	1.75	2.62	2.12
1-3/4x24	28000	21.25	28.38	24.00	2.19	3.62	1.75	2.62	2.12
2x24	37000	27.60	29.00	24.00	2.50	4.12	2.00	3.00	2.38
2-1/2x24	60000	54.00	31.06	24.00	3.53	5.62	2.75	3.88	3.12
2-3/4x24	75000	54.00	31.06	24.00	3.53	5.62	2.75	3.88	3.12

TURNBUCKLE



日式螺旋扣

■ RIGGING SCREW

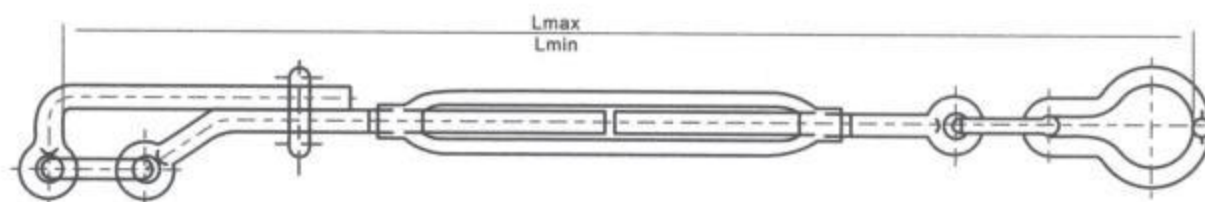


Rigging Screw (JISF3403)

Size (mm)	Wire Rope Dia. (mm)	S.W.L (KN)	Screw Dia. (mm)	Weight (kgs)
14	14	20.6	M24	5.97
16	16	25.5	M27	8.58
18	18	32.4	M30	11.6
22	20-22.4	50.0	M33	14.8
24	24	57.9	M39	19.4
25	25	67.7	M42	23.9
30	28-30	90.0	M48	30.2
32	32	103.0	M48	36.2
34	34	112.8	M52	43.2
36	36	127.5	M56	51.1
38	38	142.2	M60	59.9
40	40	161.8	M64	70.7
42	42.5	181.4	M68	93.5
45	45	206.0	M68	105
48	47.5	226.0	M76X6	117
50	50	250.1	M76X6	124

捆绑花兰

■ DECKLASHING TURNBUCKLES



DECKLASHING TURNBUCKLES

Size	DIMENSIONS(MM)			Weight(kgs)
	Lmax	Lmin	d	
1-1/4x18"	1800	1345	M32	0.11



吊环和旋转环

EYE BOLT & NUT SWIVEL



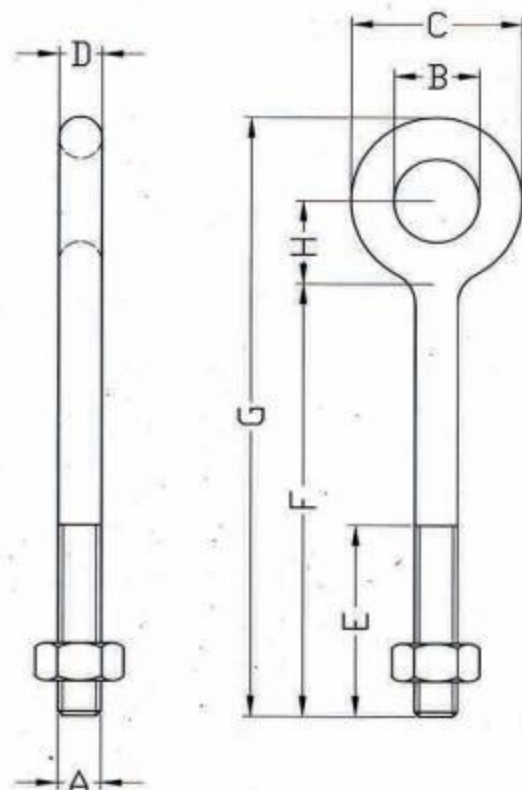
EYE BOLT&NUT



G291 美式吊环

■ US TYPE FORGED REGULAR NUT EYE BOLTS(G291)

- Material: Carbon 1045 Steel
- Ultimate Load at 5 times the Working Load Limit
- Finish: Hot Dip Galvanized according to ASTM A153
- Packing with Gunny bag or Carton Box



SIZE	WLL (lbs)	100/WEIGHT (lbs)	DIMENSION(in)							
			A	B	C	D	E	F	G	H
1/4x2	650	8.2	0.25	0.5	1	0.25	1.5	2	3.06	0.56
1/4x4	650	11.7	0.25	0.5	1	0.25	2.5	4	5.06	0.56
5/16x2-1/4	1200	13.3	0.31	0.62	1.25	0.31	1.5	2.25	3.56	0.69
5/16x4-1/4	1200	25	0.31	0.62	1.25	0.31	2.5	4.25	5.56	0.69
3/8x2-1/2	1550	23.3	0.38	0.75	1.5	0.38	1.5	2.5	4.12	0.88
3/8x4-1/2	1550	29.5	0.38	0.75	1.5	0.38	2.5	4.5	6.12	0.88
3/8x6	1550	35.2	0.38	0.75	1.5	0.38	2.5	6	7.62	0.88
1/2x3-1/4	2600	50.3	0.5	1	2	0.5	1.5	3.25	5.38	1.12
1/2x6	2600	66.1	0.5	1	2	0.5	3	6	8.12	1.12
1/2x8	2600	82	0.5	1	2	0.5	3	8	10.12	1.12
1/2x10	2600	88	0.5	1	2	0.5	3	10	12.12	1.12
1/2x12	2600	114.2	0.5	1	2	0.5	3	12	14.12	1.12
5/8x4	5200	103.1	0.62	1.25	2.5	0.62	2	4	6.69	1.44
5/8x6	5200	118.2	0.62	1.25	2.5	0.62	3	6	8.69	1.44
5/8x8	5200	135.1	0.62	1.25	2.5	0.62	3	8	10.69	1.44
5/8x10	5200	153.6	0.62	1.25	2.5	0.62	3	10	12.69	1.44
5/8x12	5200	167.1	0.62	1.25	2.5	0.62	4	12	14.69	1.44
3/4x4-1/2	7200	168.6	0.75	1.5	3	0.75	2	4.5	7.69	1.69
3/4x6	7200	184.5	0.75	1.5	3	0.75	3	6	9.19	1.69
3/4x8	7200	207.9	0.75	1.5	3	0.75	3	8	11.19	1.69
3/4x10	7200	235	0.75	1.5	3	0.75	3	10	13.19	1.69
3/4x12	7200	257.5	0.75	1.5	3	0.75	4	12	15.19	1.69
3/4x15	7200	298	0.75	1.5	3	0.75	5	15	18.19	1.69
7/8x5	10600	270	0.88	1.75	3.5	0.88	2.5	5	8.75	2
7/8x8	10600	308	0.88	1.75	3.5	0.88	4	8	11.75	2
7/8x12	10600	400	0.88	1.75	3.5	0.88	4	12	15.75	2
1x6	13300	421	1	2	4	1	3	6	10.31	2.31
1x9	13300	468.5	1	2	4	1	4	9	13.31	2.31
1x12	13300	540	1	2	4	1	4	12	16.31	2.31
1x18	13300	650	1	2	4	1	7	18	22.31	2.31
1-1/4x8	21000	750	1.25	2.5	5	1.25	4	8	13.38	2.88
1-1/4x12	21000	900	1.25	2.5	5	1.25	4	12	17.38	2.88
1-1/4x20	21000	1210	1.25	2.5	5	1.25	6	20	25.38	2.88

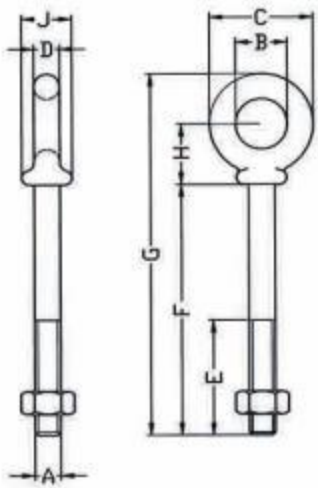
G277美式吊环

■ US TYPE FORGED SHOULDER NUT EYE BOLTS(G277)



- Material:Carbon 1045 Steel
- Ultimate Load at 5 times the Working Load Limit
- Finish:Hot Dip Galvanized according to ASTM A153
- Packing with Gunny bag or Carton Box

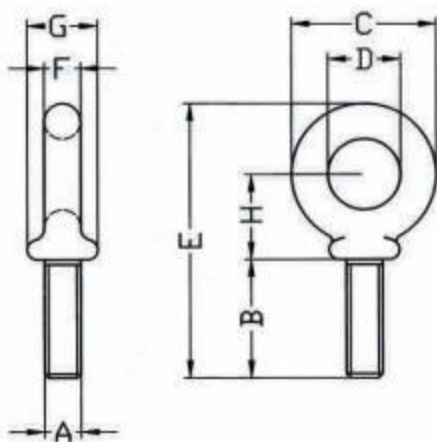
SIZE	WLL (lbs)	100/WEIGHT (lbs)	DIMENSION(in)								
			A	B	C	D	E	F	G	H	J
1/4x2	650	6.6	0.25	0.5	0.88	0.19	1.5	2	2.94	0.5	0.47
1/4x4	650	9.1	0.25	0.5	0.88	0.19	2.5	4	4.94	0.5	0.47
5/16x2-1/4	1200	12.5	0.31	0.62	1.12	0.25	1.5	2.25	3.5	0.69	0.56
5/16x4-1/4	1200	18.8	0.31	0.62	1.12	0.25	2.5	4.25	5.5	0.69	0.56
3/8x2-1/2	1550	21.4	0.38	0.75	1.38	0.31	1.5	2.5	3.97	0.78	0.66
3/8x4-1/2	1550	25.3	0.38	0.75	1.38	0.31	2.5	4.5	5.97	0.78	0.66
1/2x3-1/4	2600	42.6	0.5	1	1.75	0.38	1.5	3.25	5.12	1	0.91
1/2x6	2600	56.8	0.5	1	1.75	0.38	3	6	7.88	1	0.91
5/8x4	5200	68.6	0.62	1.25	2.25	0.5	2	4	6.44	1.31	1.12
5/8x6	5200	102.4	0.62	1.25	2.25	0.5	3	6	8.44	1.31	1.12
3/4x4-1/2	7200	144.5	0.75	1.5	2.75	0.62	2	4.5	7.44	1.56	1.38
3/4x6	7200	167.5	0.75	1.5	2.75	0.62	3	6	8.94	1.56	1.38
7/8x5	10600	225	0.88	1.75	3.25	0.75	2.5	5	8.46	1.84	1.56
1x6	13300	366.3	1	2	3.75	0.88	3	6	9.97	2.09	1.81
1x9	13300	422.5	1	2	3.75	0.88	4	9	12.97	2.09	1.81
1-1/4x8	21000	650	1.25	2.5	4.5	1	4	8	12.72	2.47	2.28
1-1/4x12	21000	795	1.25	2.5	4.5	1	4	12	16.72	2.47	2.28
1-1/2x15	24000	1425	1.5	3	5.5	1.25	6	15	20.75	3	2.75



G279美式吊环

■ US TYPE FORGED MACHINERY EYE BOLTS(S279)

- Material:Carbon 1045 Steel
- Ultimate Load at 5 times the Working Load Limit
- Finish:Self Color
- Packing with Gunny bag or Carton Box



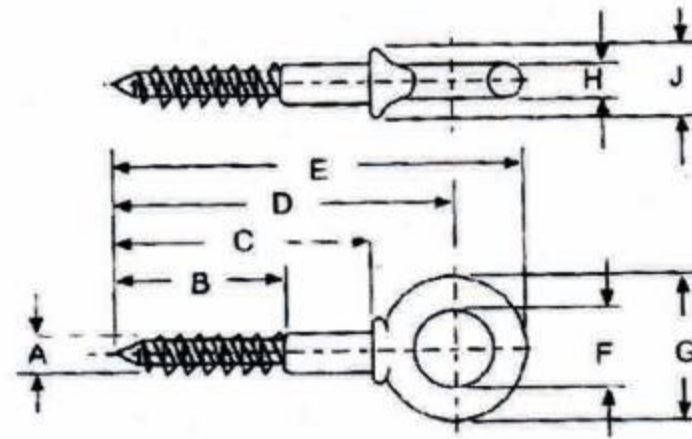
SIZE	WLL (lbs)	100/WEIGHT (lbs)	DIMENSION(in)							
			A	B	C	D	E	F	G	H
1/4x1	650	5	1/4-20	1.02	1.13	0.75	2.29	0.19	0.53	0.7
5/16x1-1/8	1200	9	5/16-18	1.15	1.38	0.88	2.74	0.25	0.59	0.9
3/8x1-1/4	1550	15	3/8-16	1.27	1.62	1	3.07	0.31	0.69	1
1/2x1-1/2	2600	28	1/2-13	1.53	1.95	1.19	3.7	0.38	0.91	1.2
5/8x1-3/4	5200	55	5/8-11	1.79	2.38	1.38	4.45	0.5	1.13	1.47
3/4x2	7200	96	3/4-10	2.05	2.76	1.5	5.07	0.63	1.38	1.64
7/8x2-1/4	10600	154	7/8-9	2.31	3.25	1.75	5.87	0.75	1.56	1.94
1x2-1/2	13300	238	1-8	2.57	3.76	2	6.66	0.88	1.81	2.21
1-3/4x3	21000	399	1 1/4-7	3.09	4.5	2.5	7.95	1	2.28	2.61
1-1/2x3-1/2	24000	720	1 1/2-6	3.6	5.5	3	9.49	1.25	2.75	3.14

EYE BOLT&NUT

G275美式吊环 ■ SCREW EYE BOLTS



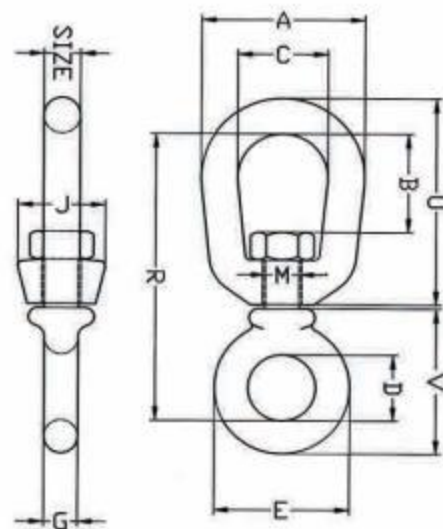
- Forged steel-Quenched and tempered
- Hot Dip Galvanized



Shank Dia. & Length (in.)	Weight Per 100 (lbs.)	DIMENSIONS (in.)								
		A	B	C	D	E	F	G	H	J
1/4x2	4.25	.25	1.50	2.00	2.50	2.94	.50	.88	.19	.47
5/16x2 1/4	6.25	.31	1.69	2.25	2.94	3.50	.63	1.13	.25	.56
3/8x2 1/2	18.75	.38	1.88	2.50	3.28	3.97	.75	1.38	.31	.66
1/2x3 1/4	37.50	.50	2.44	3.25	4.25	5.12	1.00	1.75	.38	.91
5/8x4	68.75	.63	3.00	4.00	5.31	6.44	1.25	2.25	.50	1.12

G401 旋转环

■ US TYPE CHAIN SWIVEL(G401)



- Meets Federal Specification RR-C-271D Type VII, Class 1
- Material: Carbon 1045 Steel
- Ultimate Load at 5 times the Working Load Limit
- Finish: Hot Dip Galvanized according to ASTM A153
- Packing with Gunny bag or Carton Box

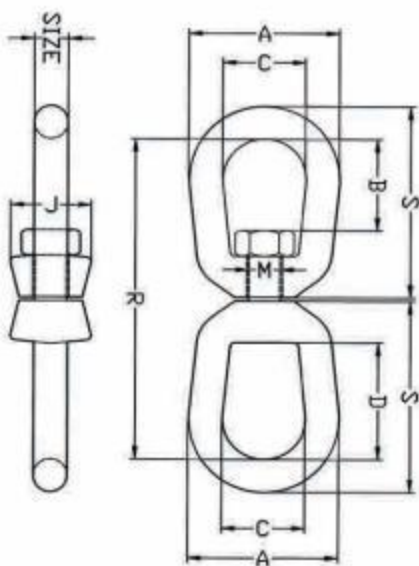
PART NUMBER	SIZE	WLL (lbs)	100/WEIGHT (lbs)	DIMENSION(in)										
				A	B	C	D	E	G	J	M	R	U	V
41406	1/4	850	0.13	1.25	0.69	0.75	0.62	1.12	0.25	0.69	0.31	2.25	1.69	1.25
41408	5/16	1250	0.25	1.63	0.81	1	0.75	1.38	0.31	0.81	0.38	2.72	2.06	1.47
41410	3/8	2250	0.54	2	0.94	1.25	1	1.75	0.38	1	0.5	3.44	2.5	1.88
41413	1/2	3600	1.12	2.5	1.31	1.5	1.25	2.25	0.5	1.31	0.63	4.25	3.19	2.44
41416	5/8	5200	2.09	3	1.56	1.75	1.5	2.75	0.62	1.5	0.75	5.13	3.88	2.94
41419	3/4	7200	3.09	3.5	1.75	2	1.75	3.25	0.75	1.88	0.88	5.78	4.94	3.46

G402美式旋转环

■ US TYPE REGULAR SWIVEL(G402)



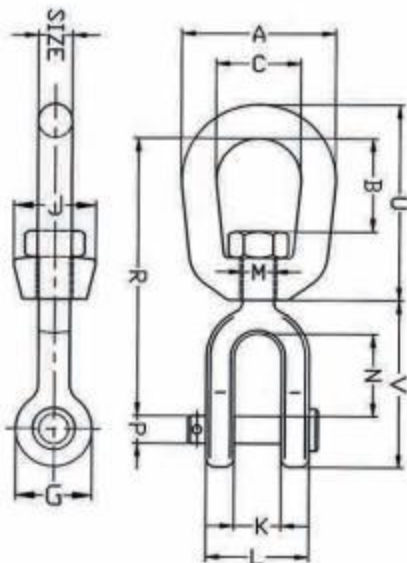
- Meets Federal Specification RR-C-271D Type VII, Class 2
- Material: Carbon 1045 Steel
- Ultimate Load at 5 times the Working Load Limit
- Finish: Hot Dip Galvanized according to ASTM A153
- Packing with Gunny bag or Carton Box



SIZE	WLL (lbs)	100/WEIGHT (lbs)	DIMENSION(in)							
			A	B	C	D	J	M	R	S
1/4	850	0.21	1.25	0.69	0.75	1.06	0.69	0.31	2.94	1.69
5/16	1250	0.39	1.63	0.81	1	1.25	0.81	0.38	3.56	2.06
3/8	2250	0.71	2	0.94	1.25	1.5	1	0.5	4.31	2.5
1/2	3600	1.32	2.5	1.31	1.5	2	1.31	0.63	5.44	3.19
5/8	5200	2.49	3	1.56	1.75	2.38	1.5	0.75	6.56	3.88
3/4	7200	4.02	3.5	1.75	2	2.63	1.88	0.88	7.19	4.31
7/8	10000	6.25	4	2.06	2.25	3.06	2.13	1	8.38	5
1	12500	8.95	4.5	2.31	2.5	3.5	2.38	1.13	9.63	5.75
1-1/4	18000	16.37	5.63	2.69	3.13	3.69	3	1.63	11.44	6.75
1-1/2	45200	45.79	7	3.88	4	4.19	4	2.25	17.13	10

G403美式旋转环

■ US TYPE JAW END SWIVEL(G403)



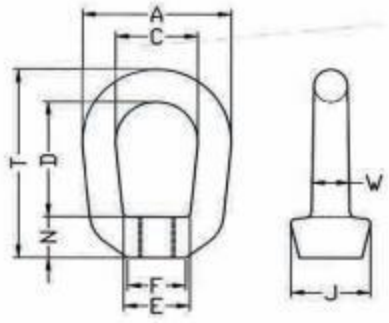
- Meets Federal Specification RR-C-271D Type VII, Class 3
- Material: Carbon 1045 Steel
- Ultimate Load at 5 times the Working Load Limit
- Finish: Hot Dip Galvanized according to ASTM A153
- Packing with Gunny bag or Carton Box

SIZE	WLL (lbs)	100/WEIGHT (lbs)	DIMENSION(in)												
			A	B	C	G	J	K	L	M	N	P	R	U	V
1/4	850	0.21	1.25	0.69	0.75	0.69	0.69	0.47	1.03	0.31	0.88	0.25	2.63	1.69	1.69
5/16	1250	0.34	1.63	0.81	1	0.81	0.81	0.5	1.13	0.38	0.88	0.31	2.94	2.06	1.81
3/8	2250	0.66	2	0.94	1.25	1	1	0.63	1.41	0.5	1.06	0.38	3.63	2.5	2.25
1/2	3600	1.34	2.5	1.31	1.5	1.31	1.31	0.75	1.75	0.63	1.31	0.5	4.5	3.19	2.88
5/8	5200	2.48	3	1.56	1.75	1.63	1.5	0.94	2.06	0.75	1.5	0.63	5.31	3.88	3.44
3/4	7200	3.88	3.5	1.75	2	1.88	1.88	1.13	2.53	0.88	1.75	0.75	6.06	4.31	4
7/8	10000	5.87	4	2.06	2.25	2.13	2.13	1.19	2.75	1	2.06	0.88	7	5	4.53
1	12500	9.84	4.5	2.31	2.5	2.63	2.38	1.75	3.72	1.13	2.81	1.13	8.56	5.75	5.94
1-1/4	18000	15.75	5.69	2.69	3.13	3.13	3	2.06	4.31	1.63	2.81	1.38	9.75	7.06	6.38
1-1/2	45200	54.75	7	3.88	4	5.63	4	2.88	6	2.25	4.44	2.25	14.25	10	10.84

G400吊环

■ US TYPE FORGED EYE NUT(G400)

- Material: Carbon 1045 Steel
- Ultimate Load at 5 times the Working Load Limit
- Finish: Hot Dip Galvanized according to ASTM A153
- Packing with Gunny bag or Carton Box

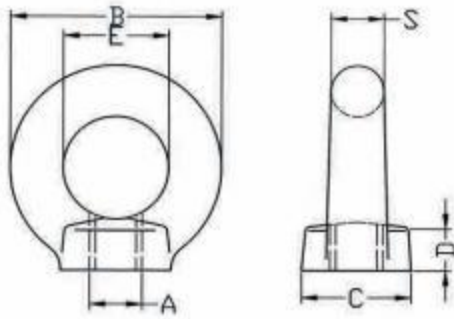


Size No.	Std. Tap	DIMENSION(in)							Max Tap Size Possible	WLL (lbs)	Weight (lbs)
		A	C	D	E	F	S	T			
1	1/4	1 1/4	3/4	1 1/16	2 1/32	1/2	1/4	1 11/16	3/8	520	0.09
1A	5/16	1 1/4	3/4	1 1/16	2 1/32	1/2	1/4	1 11/16	3/8	850	0.09
2	3/8	1 5/8	1	1 1/4	3/4	9/16	5/16	2 1/16	7/16	1250	0.18
3	7/16	2	1 1/4	1 1/2	1	13/16	3/8	2 1/2	1/2	1700	0.29
3A	1/2	2	1 1/4	1 1/2	1	13/16	3/8	2 1/2		2250	0.29
4	5/8	2 1/2	1 1/2	2	1 3/16	1	1/2	3 3/16	3/4	3600	0.58
5	3/4	3	1 3/4	2 3/8	1 3/8	1 1/8	5/8	3 7/8	7/8	5200	1.00
6	7/8	3 1/2	2	2 5/8	1 5/8	1 5/16	3/4	4 5/16	1	7200	1.70
7	1	4	2 1/4	3 1/16	1 7/8	1 9/16	7/8	5	1 1/4	10000	2.75
7A	1 1/8	4	2 1/4	3 1/16	1 7/8	1 9/16	7/8	5	1 1/4	12300	2.75
8	1 1/4	4 1/2	2 1/2	3 1/2	1 15/16	1 7/8	1	5 3/4	1 1/2	15500	3.85
9	1 3/8	5	2 3/4	2 3/4	2	2	1 1/8	6 1/4	1 1/2	18500	5.00
10	1 1/2	5 5/8	3 1/8	4	2 3/8	2 1/4	1 1/4	6 3/4	1 3/4	22500	6.70
11	2	7	4	6 1/4	4	3 3/8	1 1/2	10	2 3/4	40000	18.70

DIN582 吊环

■ DIN582 EYE NUT

- Material: Carbon 1045 Steel
- Ultimate Load at 5 times the Working Load Limit
- Finish: Self color or Electronic Galvanized
- Packing with Gunny bag or Carton Box
- Certificates can be supplied on request

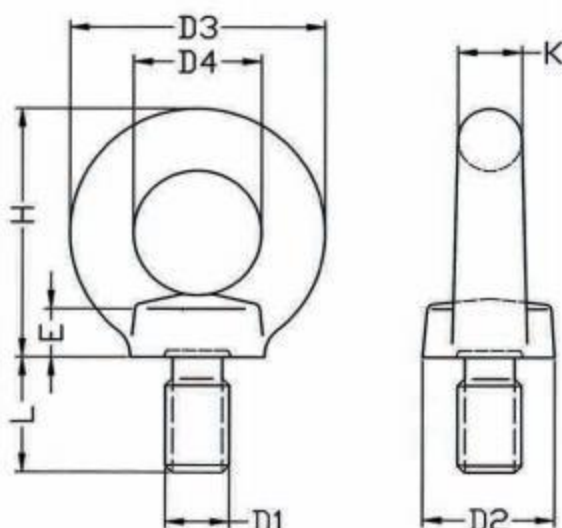


SIZE	WLL(ton.)	WEIGHT PER 100(kg)	DIMENSIONS(mm)					
			d1	d2	d3	e	h	k
M6	0.08	4.5	20	36	20	8.5	18	8
M8	0.14	5	20	36	20	8.5	18	8
M10	0.23	9	25	45	25	10	22.5	10
M12	0.34	16	30	54	30	11	26	12
M14	0.49	24	35	63	35	13	30.5	14
M16	0.7	24	35	63	35	13	30.5	14
M18	0.93	36	40	72	40	16	35	16
M20	1.2	36	40	72	40	16	35	16
M22	1.5	58	45	81	45	18	40	18
M24	1.8	72	50	90	50	20	45	20
M27	2.5	70	50	90	50	20	45	20
M30	3.6	132	65	108	60	25	55	24
M33	4.3	130	65	108	60	25	55	24
M36	5.1	208	75	126	70	30	65	28
M39	6.1	202	75	126	70	30	65	28
M42	7.0	311	85	144	80	35	75	32
M45	8	304	85	144	80	35	75	32
M48	8.6	502	100	166	90	40	85	38
M52	9.9	495	100	166	90	40	85	38
M56	11.5	669	110	184	100	45	95	42
M64	16.0	930	120	206	110	50	105	48
M72	20	18500	150	260	140	60	130	60
M80	28	27300	170	296	160	70	150	68
M100	40	36400	190	330	180	80	165	75

DIN580 吊环

■ DIN580 EYE BOLT

- Material: Carbon 1045 Steel
- Ultimate Load at 5 times the Working Load Limit
- Finish: Self Color or Electronic Galvanized
- Packing with Gunny bag or Carton Box



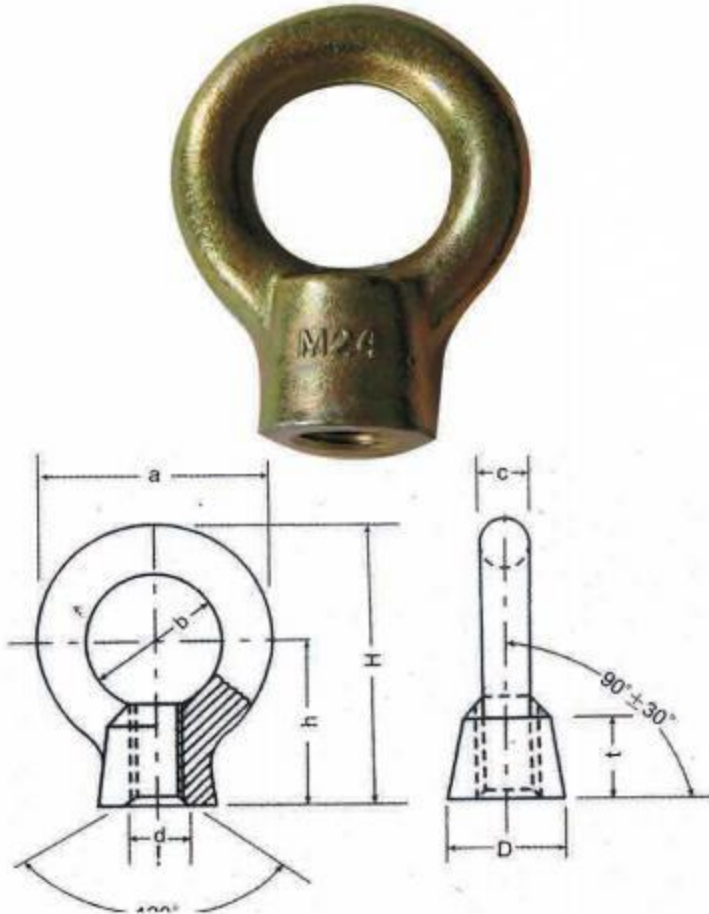
SIZE	WLL (ton.)	WEIGHT / 100 (kg)	DIMENSIONS(mm)						
			d1	d2	d3	b	e	h	k
M6	0.08	5	20	36	20	13	6	18	8
M8	0.14	6	20	36	20	13	6	18	8
M10	0.23	11	25	45	25	17	8	22.5	10
M12	0.34	18	30	54	30	20.5	10	26	12
M14	0.49	28	35	63	35	27	12	30.5	14
M16	0.7	28	35	63	35	27	12	30.5	14
M18	0.93	45	40	72	40	30	14	35	16
M20	1.2	45	40	72	40	30	14	35	16
M22	1.5	67	45	81	45	35	16	40	18
M24	1.8	87	50	90	50	36	18	45	20
M27	2.5	88	50	90	50	36	18	45	20
M30	3.6	166	65	108	60	45	22	55	24
M33	4.3	172	65	108	60	45	22	55	24
M36	5.1	265	75	126	70	54	26	65	28
M39	6.1	280	75	126	70	54	26	65	28
M42	7.0	403	85	144	80	63	30	75	32
M45	8	425	85	144	80	63	30	75	32
M48	8.6	638	100	166	90	68	35	85	38
M52	9.9	660	100	166	90	68	35	85	38
M56	11.5	880	110	184	100	78	38	95	42
M64	16.0	1240	120	206	110	90	42	105	48
M72	20	23300	150	260	140	100	50	130	60
M80	28	34200	170	296	160	112	55	150	68
M100	40	49100	190	330	180	130	60	165	75

EYE BOLT&NUT



JIS1169 日式吊环 RING-NUT JIS B 1169-1975

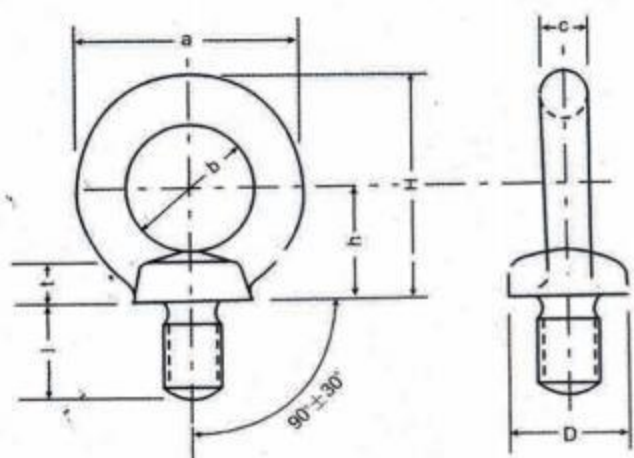
• FINISH: BRIGHT OR GALVANISED



SIZE	a	b	c	D	t	h	H	r	d1	SWL		重量
							(参考)	(约)		kg	kN	(kg)
M6	26	16	5	13	10	19	32.5	6	8	60	0.588	0.015
M8	32.6	20	6.3	16	12	23	39.3	8	8.5	80	0.785	0.03
M10	41	25	8	20	15	28	48.5	10	10.6	150	1.47	0.06
M12	50	30	10	25	19	36	61	12	12.5	220	2.16	0.125
M14	60	35	12.5	30	23	42	72	14	17	330	3.23	0.23
M16	60	35	12.5	30	23	42	72	14	17	450	4.41	0.22
M18	72	40	16	35	28	50	86	16	21.2	540	5.29	0.39
M20	72	40	16	35	28	50	86	16	21.2	630	6.18	0.38
M22	81	45	18	40	33	58	98.5	20	23	790	7.74	0.56
M24	90	50	20	45	38	66	111	25	25	950	9.32	0.8
M27	110	60	25	60	46	80	135	30	31.5	1200	11.7	1.62
M30	110	60	25	60	46	80	135	30	31.5	1500	14.7	1.58
M33	110	60	25	60	46	80	135	30	31.5	1900	18.6	1.51
M36	133	70	31.5	70	55	95	161.5	35	37.5	2300	22.6	2.75
M42	151	80	35.5	80	64	109	184.5	40	45	3400	33.3	4.1
M48	170	90	40	90	73	123	208	45	50	4500	44.1	5.9
M64	210	110	50	110	90	151	256	50	67	9000	88.2	10.5

JIS1168 日式吊环 EYE SCREW JIS B 1168-1975

• Finish: BRIGHT OR GALVANISED



SIZE (d)	a	b	c	D	t	h	H	l	e	g	r1	da	r2	k	SWL		重量
							(参考)			(最小)	(最小)	(最大)	(约)	(约)	kg	kN	(kg)
M5	26	16	5	13	4.9	13.5	26.5	12.5	3	3.9	0.8	7.1	2	1	40	0.39	0.014
M6	26	16	5	13	4.9	13.5	26.5	12.5	3	4.5	0.8	7.1	2	1	60	0.59	0.015
M8	32.6	20	6.3	16	5	17	33.3	15	3	6	1	9.2	4	1.2	80	0.79	0.03
M10	41	25	8	20	7	21	41.5	18	4	7.7	1.2	11.2	4	1.5	150	1.47	0.06
M12	50	30	10	25	9	26	51	22	5	9.4	1.4	14.2	6	2	220	2.16	0.12
M14	60	35	12.5	30	11	30	60	27	5	11.1	1.5	16.2	6	2	330	3.23	0.2
M16	60	35	12.5	30	11	30	60	27	5	13	1.6	18.2	6	2	450	4.41	0.22
M18	72	40	16	35	13	35	71	30	6	14.4	2	20.2	8	2.5	540	5.29	0.37
M20	72	40	16	35	13	35	71	30	6	16.4	2	22.4	8	2.5	630	6.18	0.4
M22	81	45	18	40	15	40	80.5	35	7	18.3	2.3	24.4	10	2.5	790	7.74	0.57
M24	90	50	20	45	18	45	90	38	8	19.6	2.5	26.4	12	3	950	9.32	0.8
M27	110	60	25	60	22	55	110	45	8	22.6	2.5	29.4	15	3	1200	11.7	1.5
M30	110	60	25	60	22	55	110	45	8	25	3	33.4	15	3.5	1500	14.7	1.54
M33	110	60	25	60	22	55	110	45	8	27.3	3	36.4	15	4	1900	18.6	1.59
M36	133	70	31.5	70	26	65	131.5	55	10	30.3	3	39.4	18	4	2300	22.6	2.83
M39	133	70	31.5	70	26	65	131.5	55	10	33	3.5	43	18	4	2850	27.9	2.9
M42	151	80	35.5	80	30	75	150.5	65	12	35.6	3.5	45.6	20	4.5	3400	33.3	4.1
M45	151	80	35.5	80	30	75	150.5	65	12	38	3.5	49	20	4.5	3950	38.7	4.34
M48	170	90	40	90	35	85	170	70	12	41	4	52.6	22	5	4500	44.1	5.88
M52	170	90	40	90	35	85	170	70	12	44.9	4	56.8	22	5	5600	54.9	6.16
M56	210	110	50	110	42	105	210	80	14	48.3	4.5	61	25	5	6750	66.2	10.85
M64	210	110	50	110	42	105	210	90	14	55.7	5	71	25	6	9000	88.3	11.6
M80x6	266	140	63	130	50	130	263	105	14	71	5	87	35	6	15000	147	21.5
M90x6	340	180	80	170	60	165	335	130	14	81	5	97	35	6	18000	177	44
M100x6	340	180	80	170	60	165	335	130	14	91	5	108	40	6	20000	196	46.5

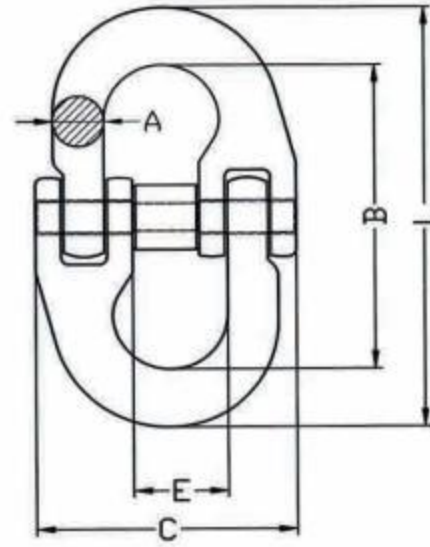


环 LINKS



G80 欧式连接环

■ G80 EUROPEAN TYPE CONNECTING LINK

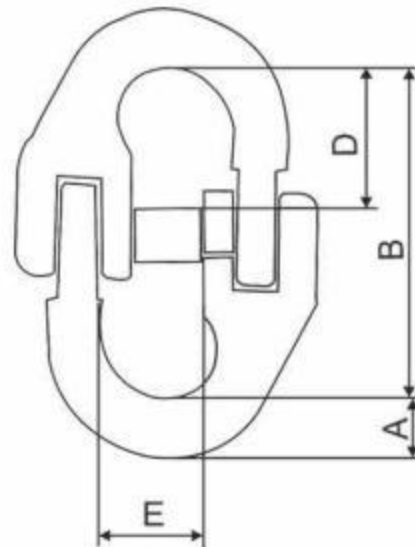
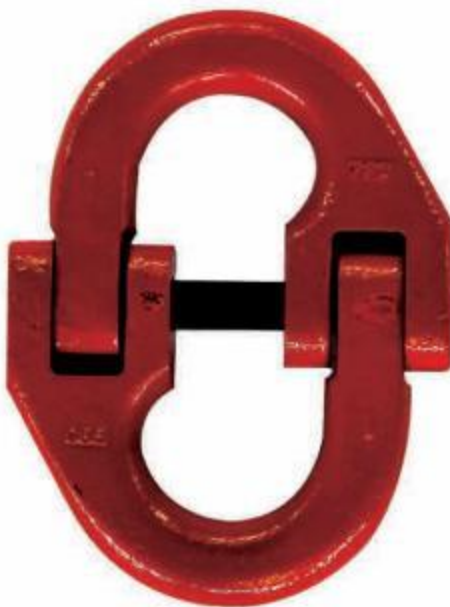


- Available with Alloy Steel
- Forged-Quenched and Tempered
- Ultimate Load at 4 times the Working Load Limit
- Finishing: Powder coated
- Packing with Carton Box

SIZE	WLL (IT)	WEIGHT (kg)	DIMENSION(in)				
			A	B	C	E	L
6	1.12	0.08	8	44	38.3	14	62.4
7-8	2	0.2	10	60	51	18.5	83
10	3.15	0.37	13	72	61.5	23	101.9
13	5.3	0.73	16	87.5	78	28	124.3
16	8	1.53	20	103.5	105	34	149.5
18-20	12.5	2.6	23	115	120	42	167.9
22	15	3.1	27	130	132	48	192.1
26	21.2	5.4	32	163	158	61	236.6

A337 美式连接环

■ US TYPE CONNECTING LINK(A337)



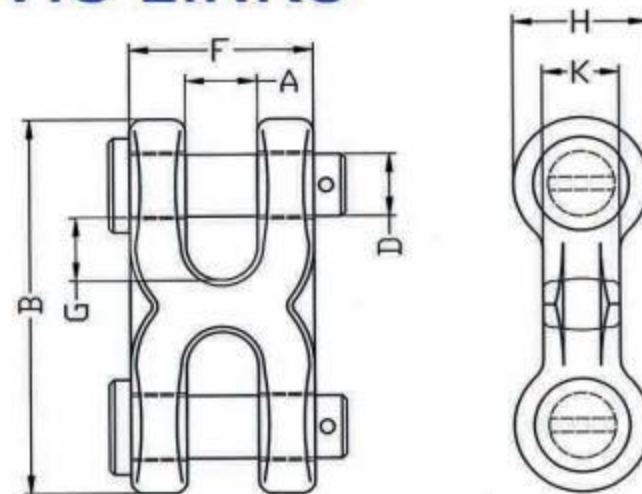
- Available with Alloy Steel
- Forged-Quenched and Tempered
- Ultimate Load at 4 times the Working Load Limit
- Finishing: Powder coated
- Packing with Carton Box

SIZE (in)	WLL (lbs)	WEIGHT (lbs)	DIMENSION (in)			
			B	D	E	H
9/32(1/4)	3500	0.28	1.85	0.68	1.81	0.35
5/16	4500	0.55	2.20	0.77	1.98	0.38
3/8	7100	0.84	2.60	0.94	2.56	0.52
1/2	12000	1.60	3.40	1.27	3.30	0.64
5/8	18100	2.86	4.13	1.48	3.65	0.75
3/4	28300	5.00	5.08	1.75	4.70	0.96
7/8	34200	7.50	5.47	2.18	5.63	1.06
1	47700	11.03	6.10	2.50	6.22	1.22
1.1/4	72300	20.39	7.99	2.76	8.12	1.50

H形双环

■ TWIN CLEVIS LINKS

- Available with Alloy Steel
- Forged-Quenched and Tempered
- Ultimate Load at 4 times the Working Load Limit
- Finishing: Yellow Chromate
- Packing with Carton Box



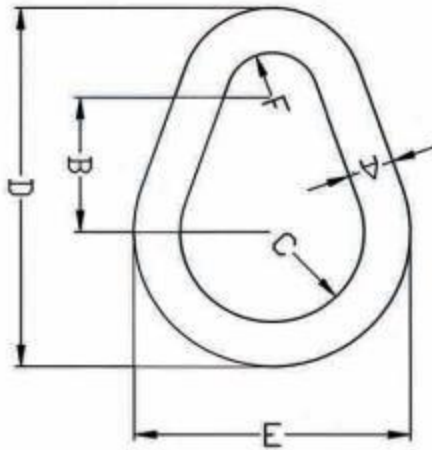
SIZE	WLL(lbs)	WEIGHT (lbs)	A	B	D	F	G	H	K
1/4-5/16	4700	0.37	0.47	2.5	1.56	1.31	0.43	0.94	0.5
3/8	6600	0.5	0.53	2.81	1.81	1.53	0.5	1	0.56
7/16-1/2	11300	1.1	0.65	3.62	2.31	1.91	0.63	1.31	0.81

梨形环

PEARL SHAPED SLING LINK



- Available with Carbon Steel and Alloy Steel
- Forged-Quenched and Tempered
- Ultimate Load at 5 times the Working Load Limit
- Finishing: Self Color or Powder coated
- Packing with Carton Box

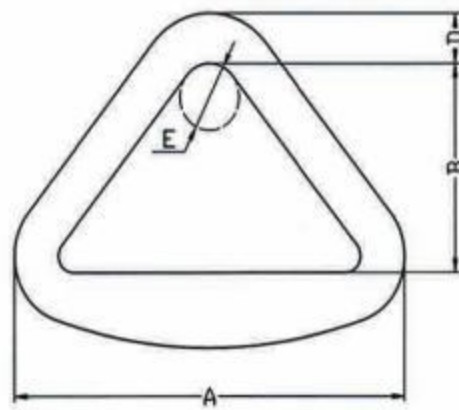


FORGED PEAR SHAPE LINK

SIZE	W.L.L(T)		SIZE(mm)				
	in	mm	Carbon(6:1)	Alloy(5:1)	Inside Length	Inside width Small end	Inside width Large end
3/8	10	0.8	1.6	57.2	19.1	38.1	0.1
1/2	13	1.3	3.2	76.2	25.4	50.8	0.25
5/8	16	1.9	4	95.3	31.8	63.5	0.5
3/4	19	2.7	5.6	114.3	38.1	76.2	0.8
7/8	22	3.8	6.4	133.4	44.5	88.9	1.26
1	25	4.9	11	152.4	50.8	101.6	1.95
1-1/8	28	5.4	13.9	171.5	57.2	114.3	2.92
1-1/4	32	7.6	16.3	190.5	63.5	127	3.75
1-3/8	35	9.3	19.5	209.6	69.8	139.7	5.12
1-1/2	38	11.4	24.7	228.6	76.2	152.4	6.5
1-3/4	45		38.5	419.1	88.9	177.8	10.2
2	51		46.5	304.8	101.6	203.2	15.3

三角环

DELTA RING



- Available with Carbon Steel
- Forged-Quenched and Tempered
- Ultimate Load at 5 times the Working Load Limit
- Finishing: Yellow Chromate or Powder Coated
- Packing with Carton Box

DELTA RING

Size (in)	M.B.S. (lbs)	Bar Dia (mm)	Outside Length (mm)	Inside Length (mm)	Weight (kg)
2	11000	12	80.3	45	0.2
3	18000	14	109.4	60	0.36
4	20000	16	142.0	74	0.62

弯D形环

BEND D RINGS



Bend D Rings
 Forged carbon steel.
 Normalied.

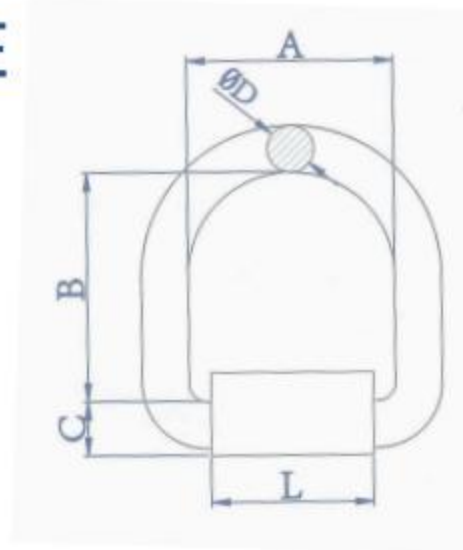
Size (α)	M.B.S.(lbs.)	WEIGHT (kgs)
107	47.000	2.15
145	40.000	2.15

LINKS



D型环带座A型

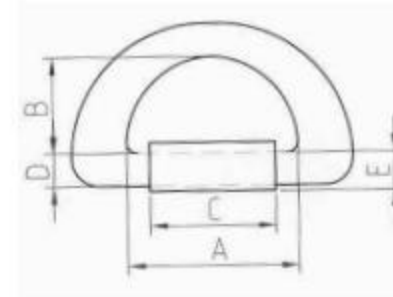
■ D RING WITH WRAPS TYPE



SIZE AxBxD(in)	DIMENSIONS(MM)					M.B.S.(T)	Weight(kgs)
	A	B	C	D	L		
2-1/4x2-1/2x1/2	57.2	63.5	15.5	12.7	44.8	5.4	0.43
3x3x5/8	76.2	76.2	23.4	15.9	63	8.2	0.85
3x3x3/4	76.2	76.2	25.4	19.1	63	12	1.25
3x3x1	76.2	76.2	30.8	25.4	64	21.3	1.91
3x4x1	76.2	101.6	30.8	25.4	64	21.3	2.15

D型环带座B型

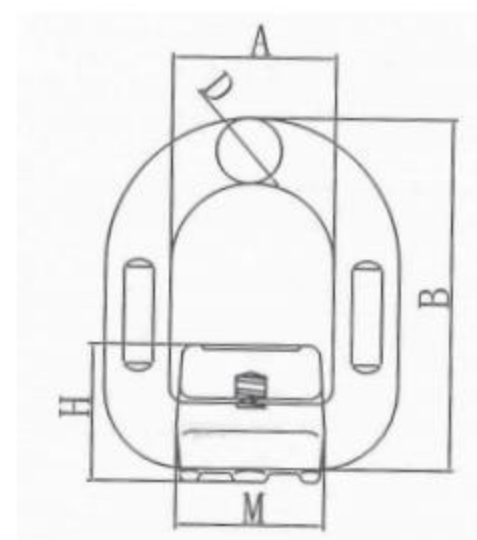
■ D RING WITH WRAPS TYPE B



SIZE (tons)	Dimensions(mm)					Weight (lbs)
	A	B	C	D	E	
36	136	80	120	21	25.5	5.42
41	144	88	125	25	30.0	8.15
50	151	90	130	27	32.0	9.71

G80D型环带座

■ G80 D RING WITH WRAPS



SIZE	WEIGHT/KG	WLL/T	B.L/T	A	B	D	M
1T	0.4	1.12	4.48	41	78.5	13	37
2T	0.47	2	8	42	88	14	40
3T	0.69	3.15	12.8	45	94	17	42.5
5T	1.46	5.3	21.2	55	118	22	50
8T	2.5	8	32	70	141	26.5	66.5
15T	5.79	15	60	97	188	34	90

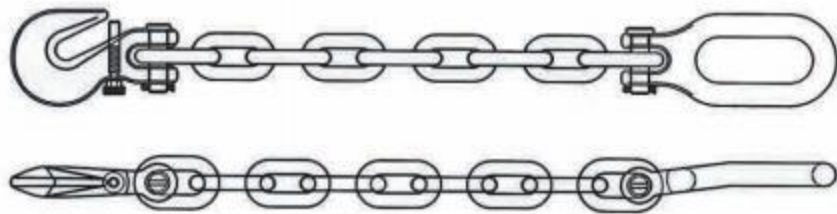


其它产品

OTHER PRODUCTS



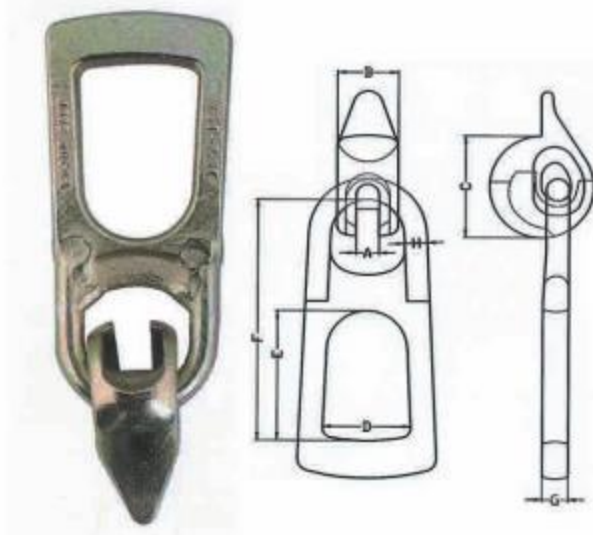
美标链条一头配钩子另一头配羊角环 ■ AGRICULTURAL CHAIN ASSEMBLY



- Available with Alloy Steel
- Forged-Quenched and Tempered
- Ultimate Load at 4 times the Working Load Limit
- Finishing: Yellow zinc
- Packing with Carton Box

SIZE	WEIGHT (kg)	DIMENSION(mm)							
		A	B	C	D	E	F	G	H
5/16	13	12	32	55	43	69.5	128.5	12	12
3/8	16	16	39	65	55	83	154	16	14

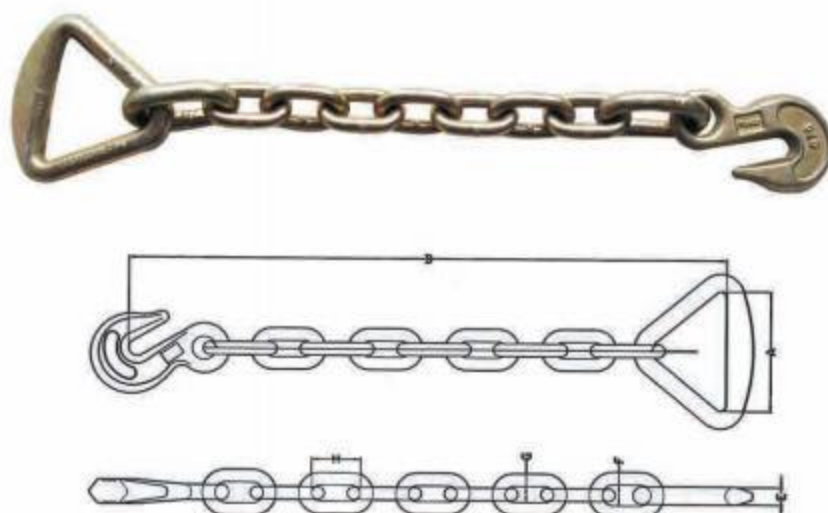
■ LIFTING HOOK



- Available with Alloy Steel
- Casted-Quenched and Tempered
- Ultimate Load at 4 times the Working Load Limit
- Finishing: Yellow zinc
- Packing with Carton Box

SIZE	WEIGHT (kg)	DIMENSION(mm)							
		A	B	C	D	E	F	G	H
1T-1.3T	0.9	12	32	55	43	69.5	128.5	12	12
1.5T-2.5T	1.35	16	39	65	55	83	154	16	14

美标链条一头配三角环另一头配眼形抓钩 ■ CHAIN ANCHOR



- G70 Chain and Eye Grab Hook
- Forged-Quenched and Tempered
- Ultimate Load at 4 times the Working Load Limit
- Finishing: Yellow zinc
- Packing with Carton Box

SIZE	DIMENSION(in)					
	A	B	E	F	G	H
3"x18"	3.07	17.95	0.57	0.79	0.55	1.18
4"x18"	4.31	18.76	0.65	0.79	0.55	1.18

系船柱 (热镀锌) MALLEABLE CLEAT

Hot Dip Galvanized

Size (inch)	I.D of Hole (mm)	N.W. (kg)
4	6.0	0.106
5	6.5	0.143
6	7.9	0.170
8	9.5	0.680
10	11.1	0.936
12	12.7	1.620
14	14.3	2.670
18	17.7	4.990



紧线器 (电镀/喷塑) WIRE TENSIONER

SIZE	KG/BOX
80X25	2.84
90X25	3.5
100X30	4.63
110X35	7.3
125X35	8.3



单元宝卡头

■ SIMPLEX WIRE ROPE CLIP



ZP.STEEL

STAINLESS STEEL 304 OR 316

SIZE MM	L MM	D MM
2	15	M4
3	20	M4
4	21.5	M5
5	26	M6
6	30	M6
9	36	M8
10	42	M10

双元宝卡头

■ DUPLEX WIRE ROPE CLIP



ZP.STEEL

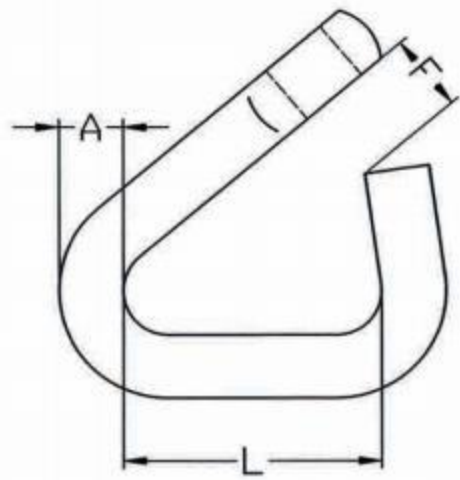
STAINLESS STEEL 304 OR 316

SIZE MM	L MM	D MM
2	37	M4
3	40	M4
4	43	M5
5	52	M6
6	60	M6
8	72	M8
10	84	M10

链扣

■ COLD SHUT

- Finish:Eletronic Galvanized
- Packing with Gunny bag or Carton Box



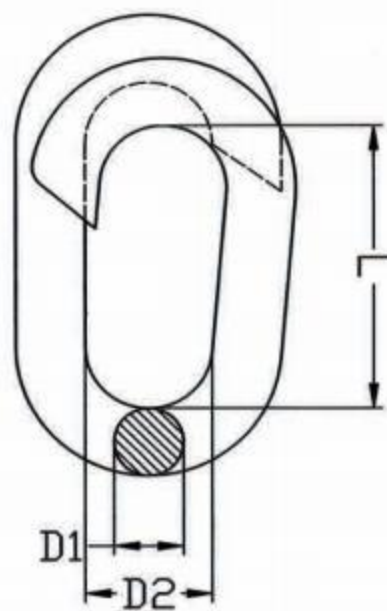
Cold Shut,ZP

Size (inch)	O.L. (mm)	WLL (lbs)	N.W. (kg/100pcs)
3/16	22	1320	3.00
1/4	25	2200	4.00
5/16	30	3300	7.00
3/8	33	5500	9.00
9/16	38	6600	10.00
1/2	40	8800	18.00

链卡

■ REPAIR LAP LINK

- Finish:Eletronic Galvanized
- Packing with Gunny bag or Carton Box



Repair Link,ZP

Size (inch)	O.L.(mm)	N.W. (kg/100pcs)
1/8X3/4	19	0.60
3/16X1	25	1.40
7/32X1-1/4	32	2.30
1/4X1-1/4	32	3.00
1/4X1-1/2	38	3.60
5/16X1-1/2	38	6.00
3/8X1-5/8	42	10.00
3/8X2	50	11.00
1/2X2-1/2	64	25.50